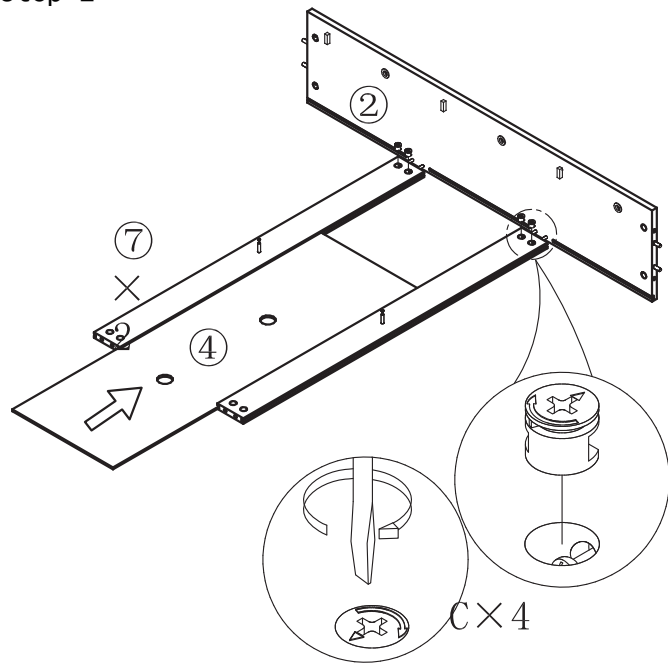
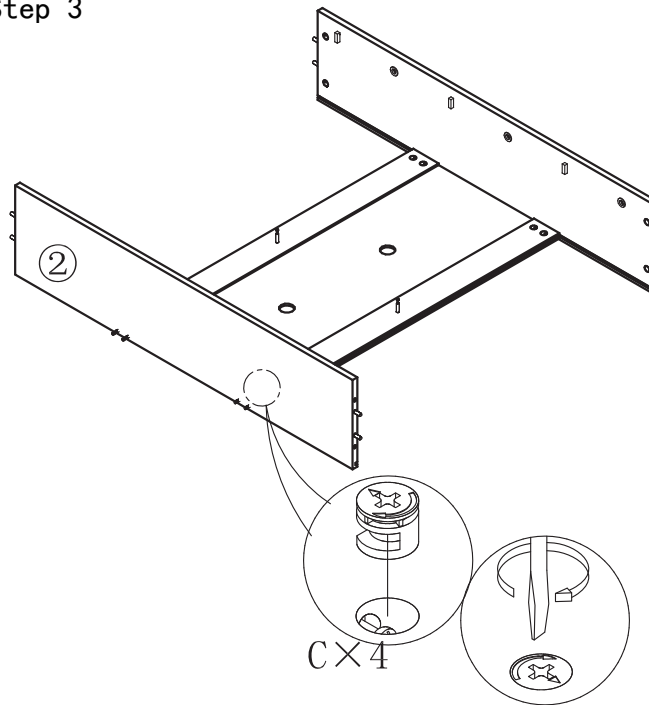


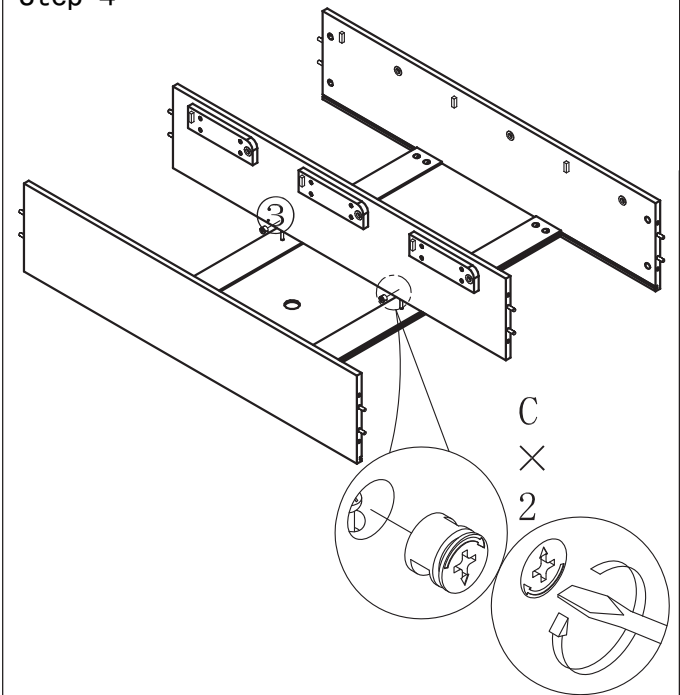
Step 2



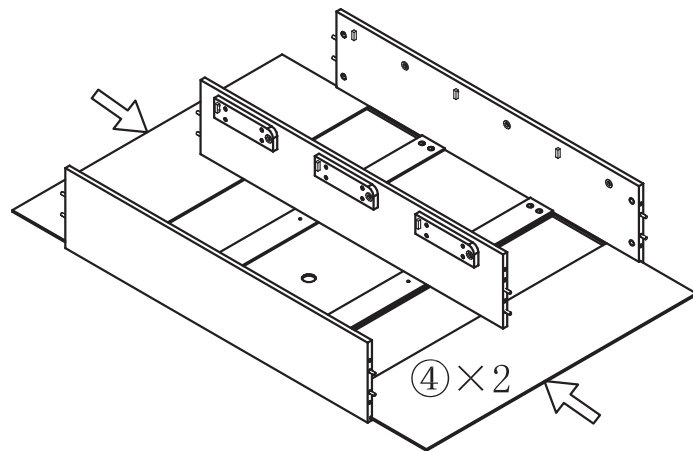
Step 3



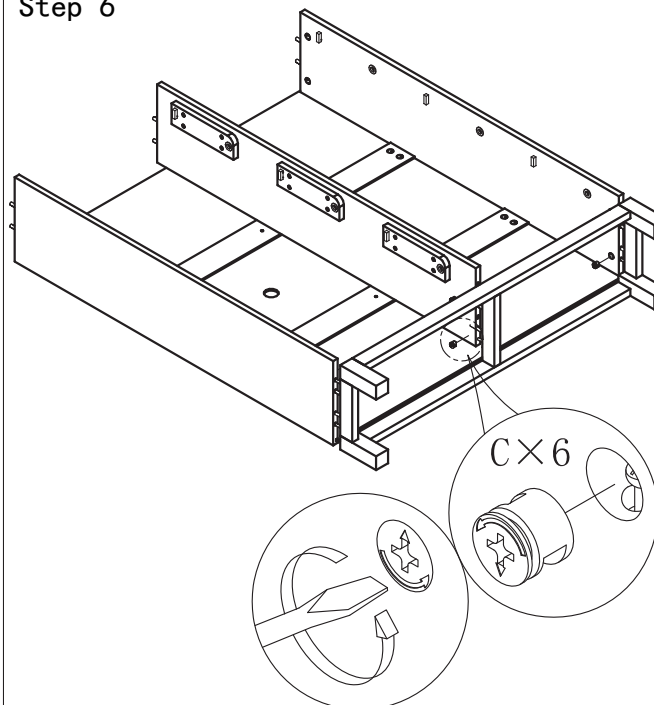
Step 4



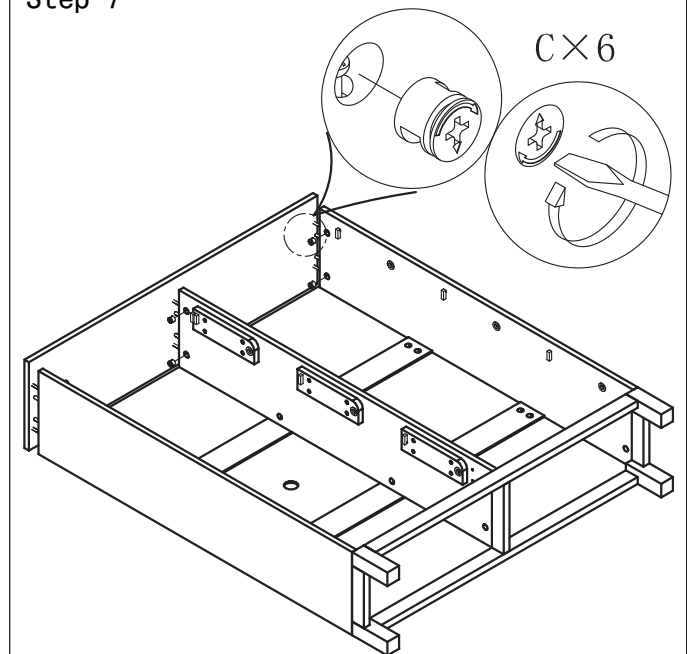
Step 5



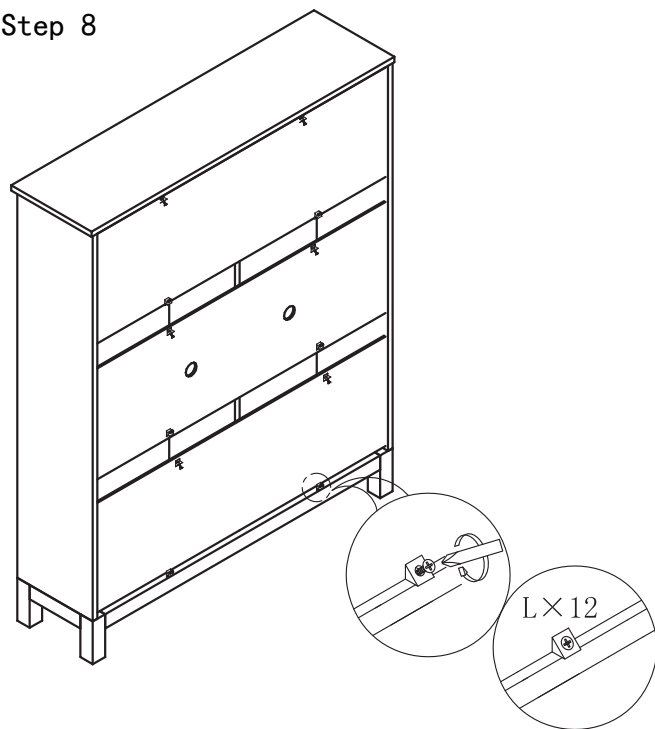
Step 6



Step 7

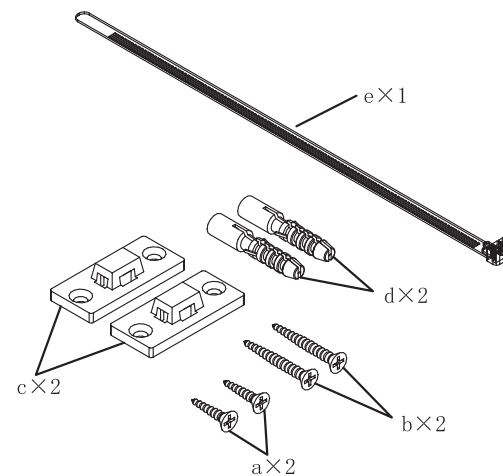


Step 8

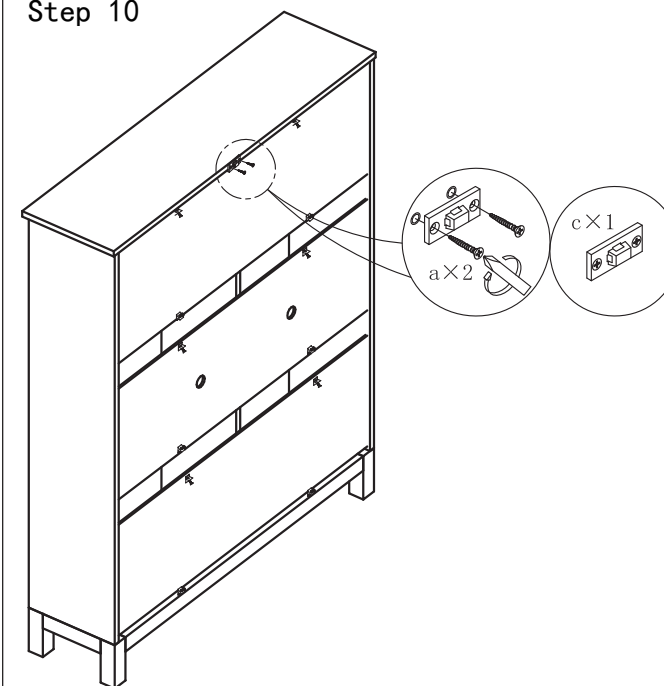


Step 9

Open M (anti-pour hardware package) 1 ×
(the following is the number of single package)

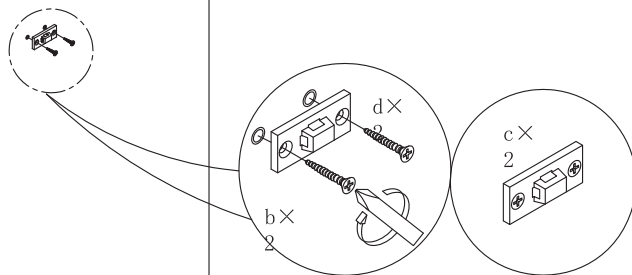


Step 10

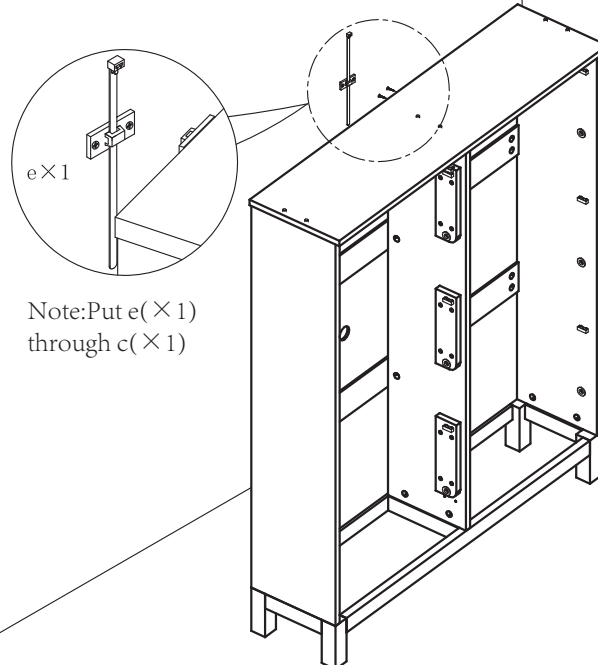


Step 11

Note: Drill holes in the wall according to the
corresponding position of c installed in the top
plate and tap into $d \times 4$, then screw into $b \times 4$

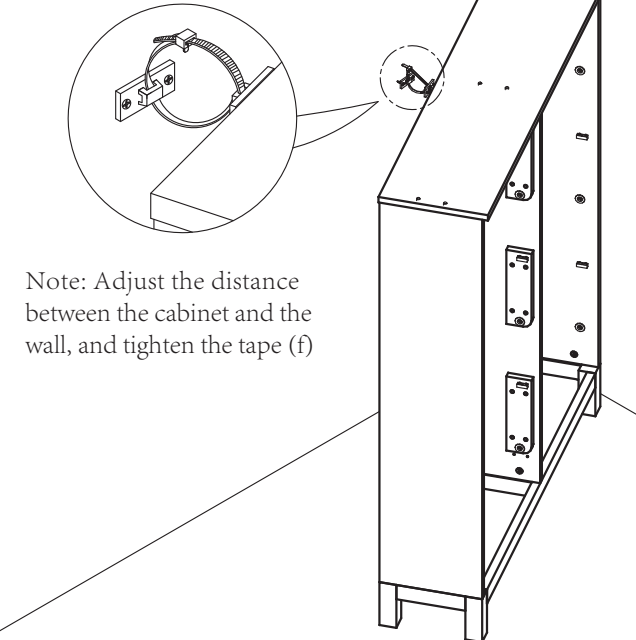


Step 12



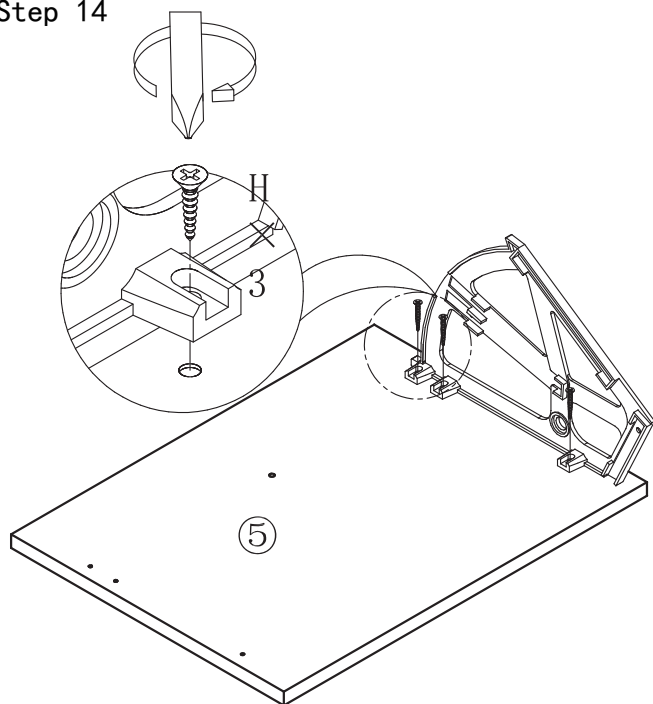
Note: Put e (× 1)
through c (× 1)

Step 13



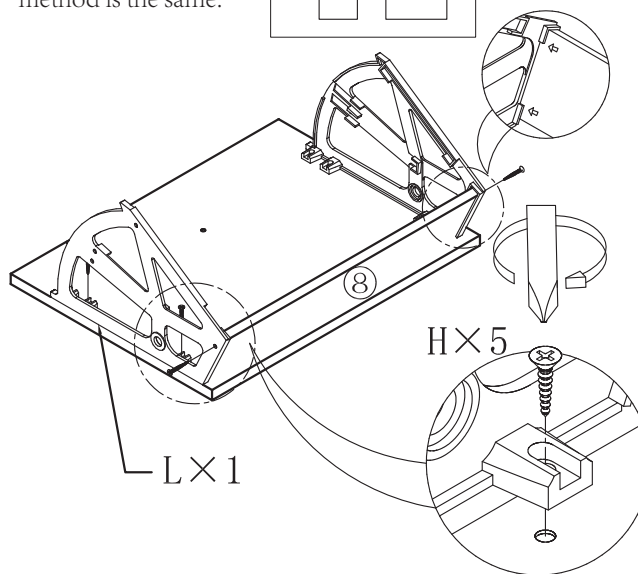
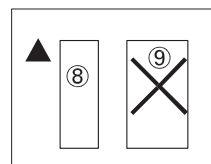
Note: Adjust the distance
between the cabinet and the
wall, and tighten the tape (f)

Step 14



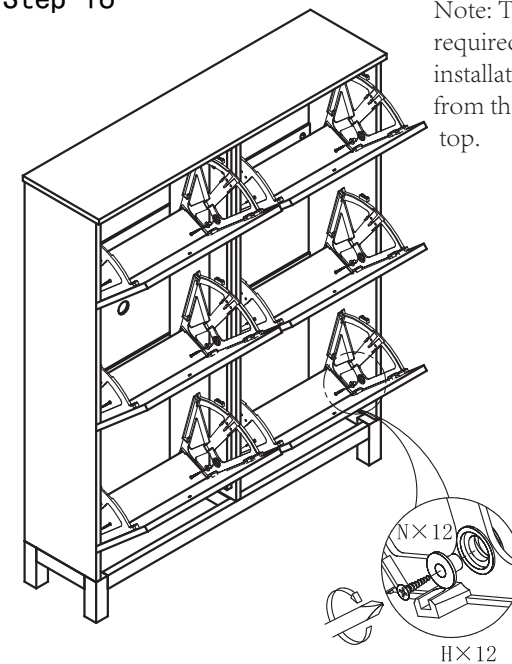
Step 15

Note: There are 6 such panels, the installation method is the same.



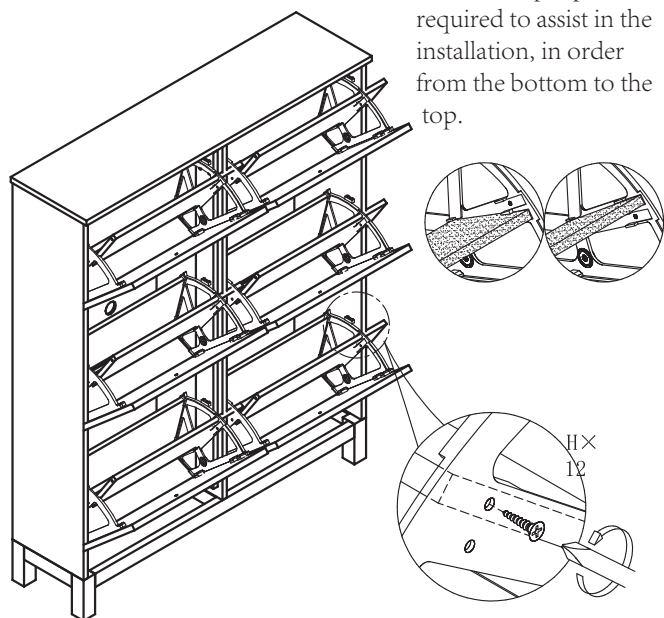
Step 16

Note: Two people are required to assist in the installation, in order from the bottom to the top.

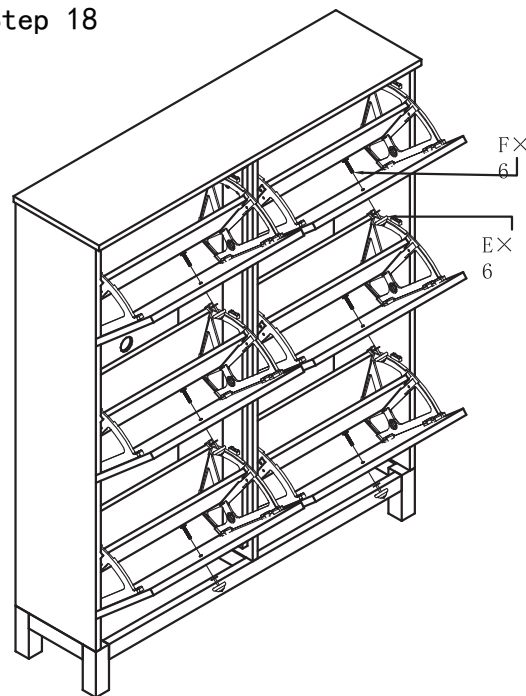


Step 17

Note: Two people are required to assist in the installation, in order from the bottom to the top.



Step 18



Step 19

