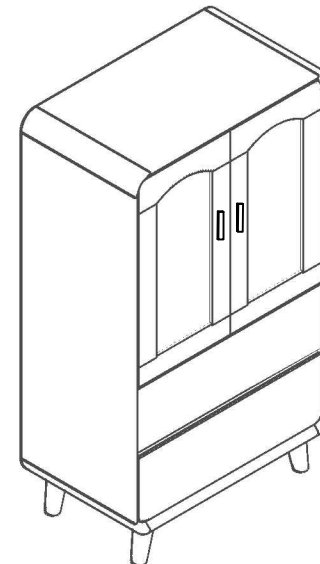


Congratulations!

You have just bought a new Make Up Table. Follow these few advices for an optimal use:

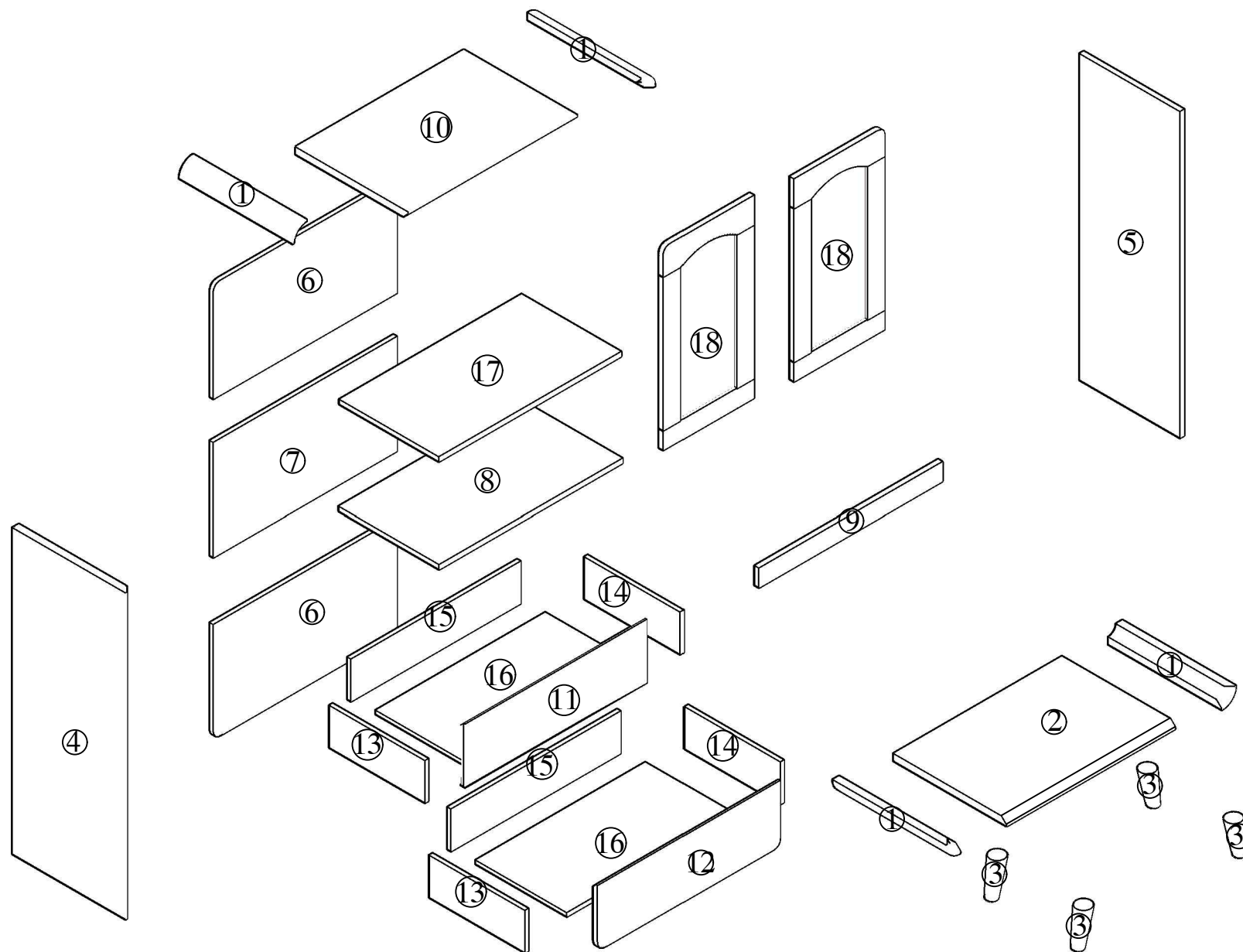
- Kindly follow the mounting steps suggested i this manual for easy assmbling
- Pleasa read carefully and keep this document for further use.
- For cleaning,we recommend you to use a damp cloth or chamois with a suitable product cleaner.
- Do not use any abrasive or poeder based cleaning products as it may damage the surface of your Make Up Table.

Assembly Time around 90 minutes.





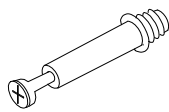

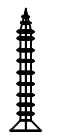

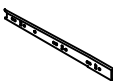


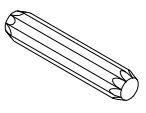


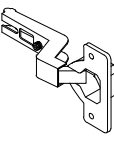
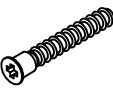

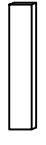
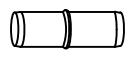

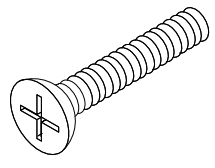
Assemble instructions

Composition:Spare parts



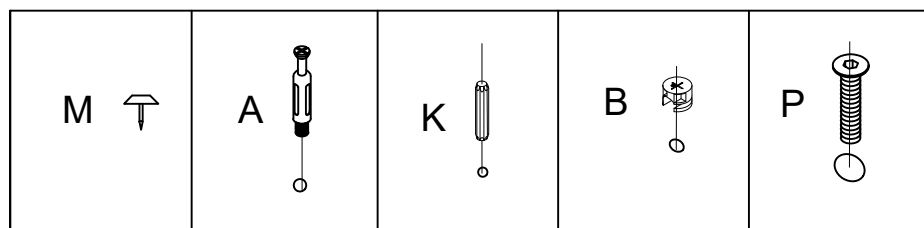
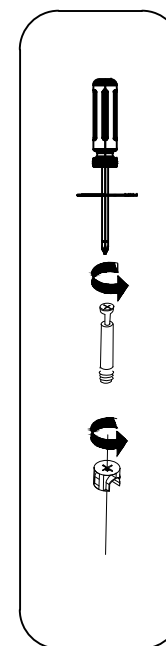
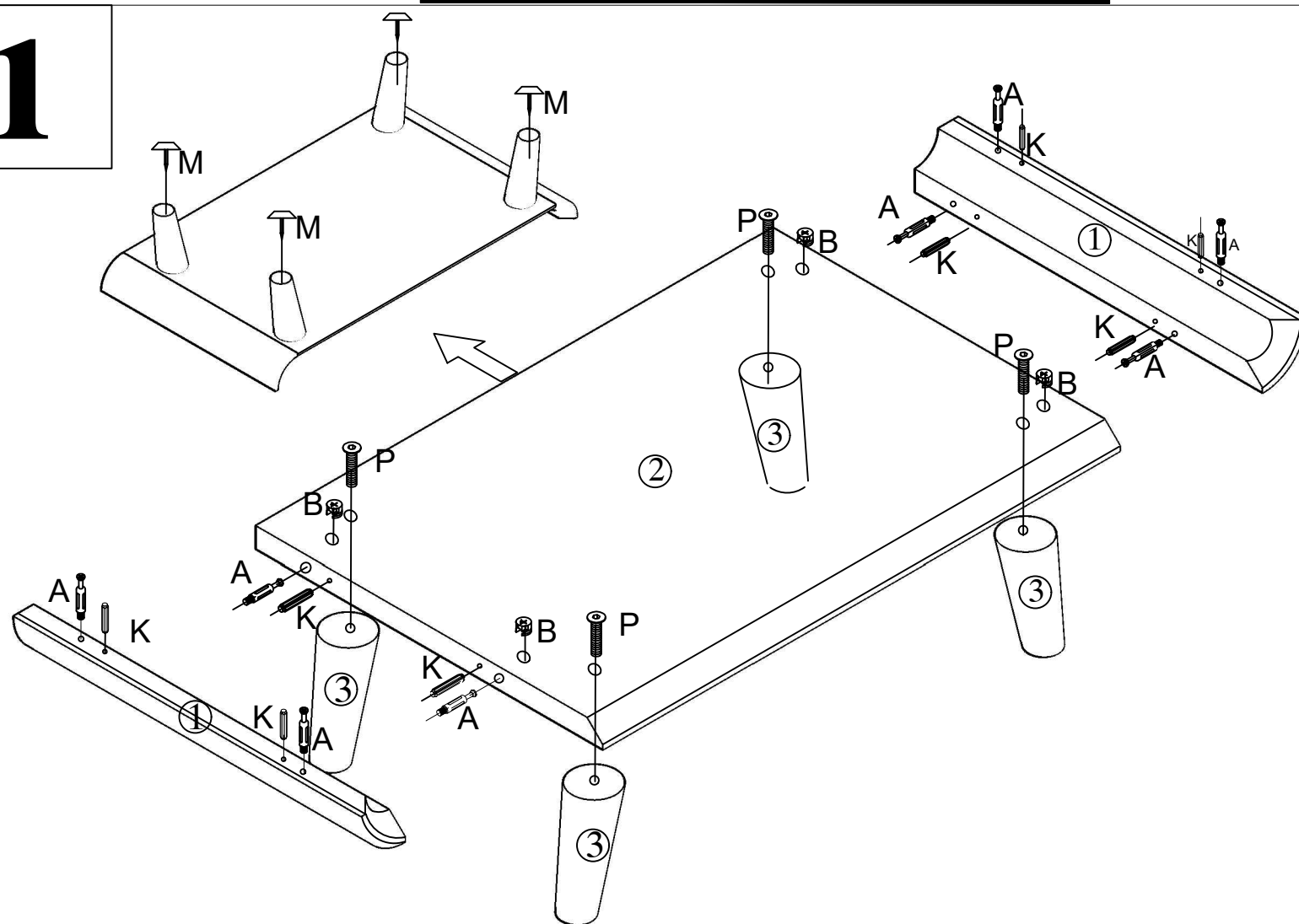
Assemble instructions

Composition:Hardware

												 Ø3.5X30			 12"		
A	X	24	B	X	24	C	X	22	D	X	22	E	X	8	F	X	4
			 Ø3X15			 Ø3X12			 Ø8X40			 Ø6X30					
G	X	4	H	X	32	I	X	8	K	X	17	L	X	22	M	X	4
			 Ø7X38														
N	X	4	O	X	1	P	X	4	Q	X	2	R	X	4	S	X	2
 Ø8X40																	
T	X	4															

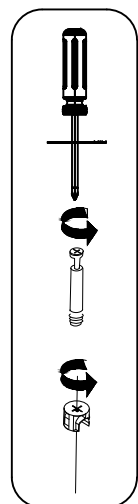
Assemble instructions Assmby Diagram

1

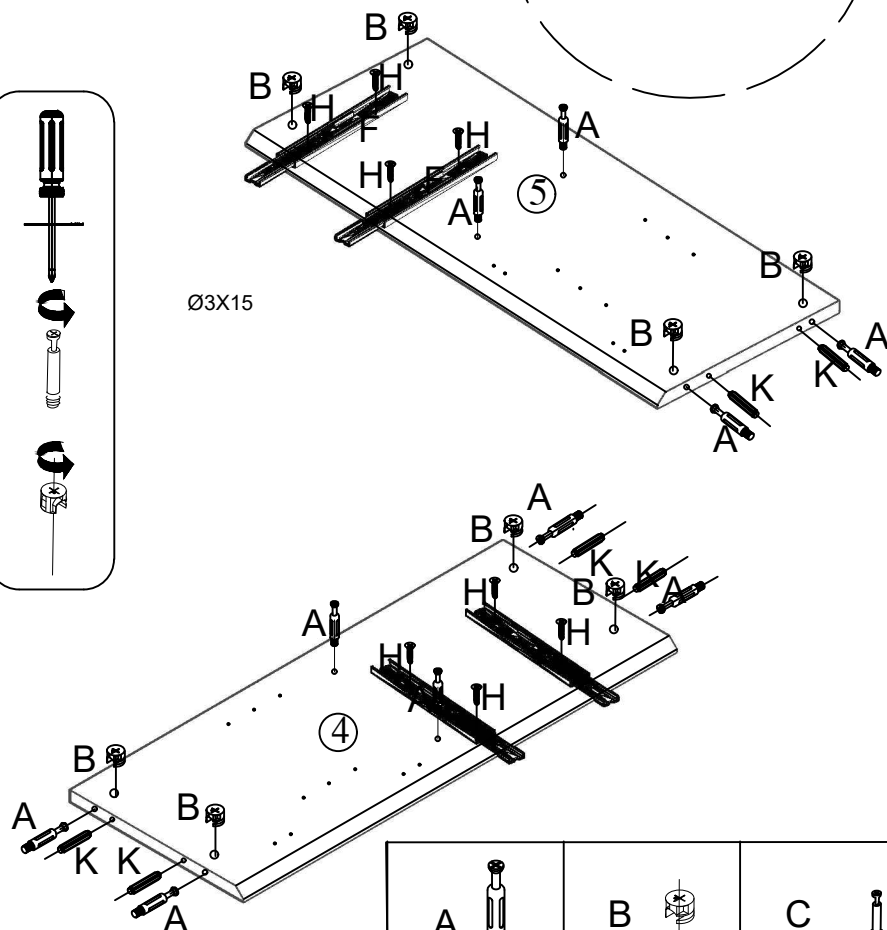


Assemble instructions Assmby Diagram

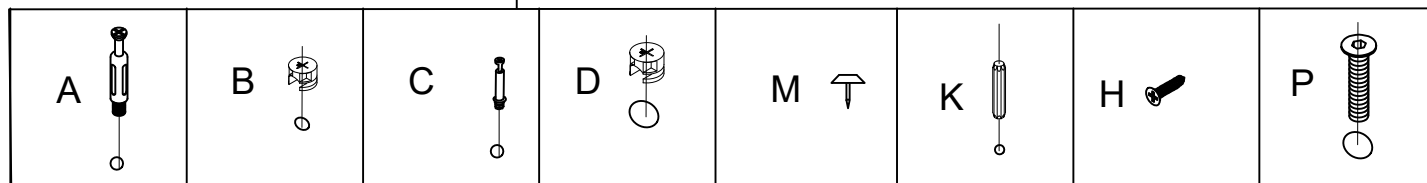
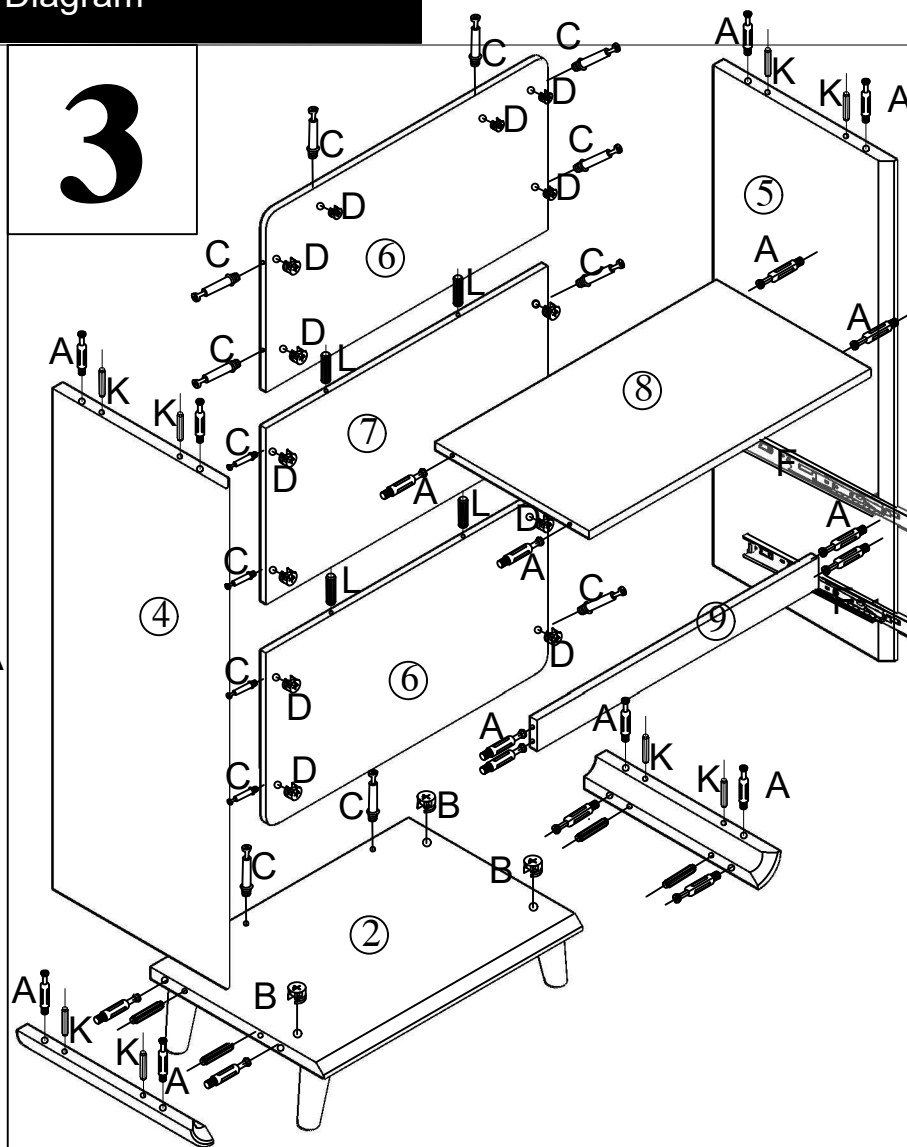
2



Ø3X15



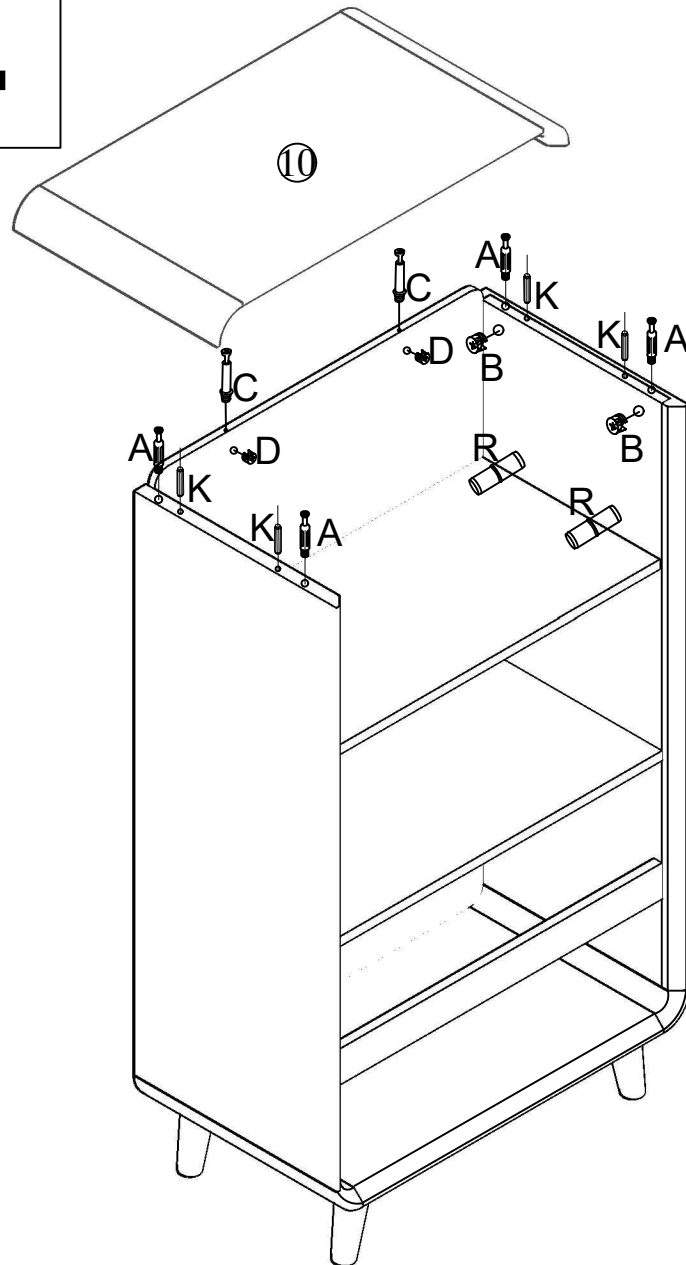
3



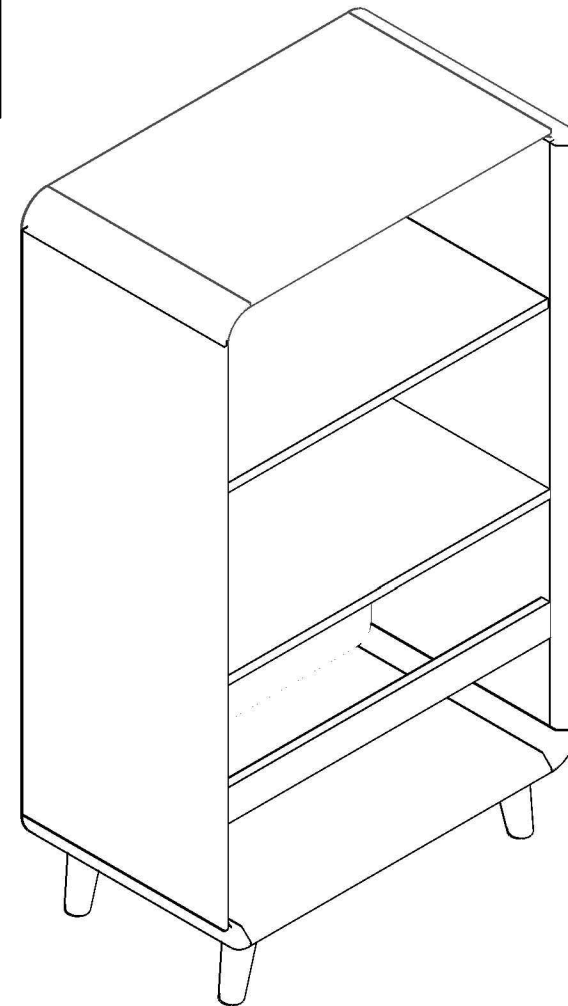
Assemble instructions

Assmby Diagram

4



5



R



A



K



C

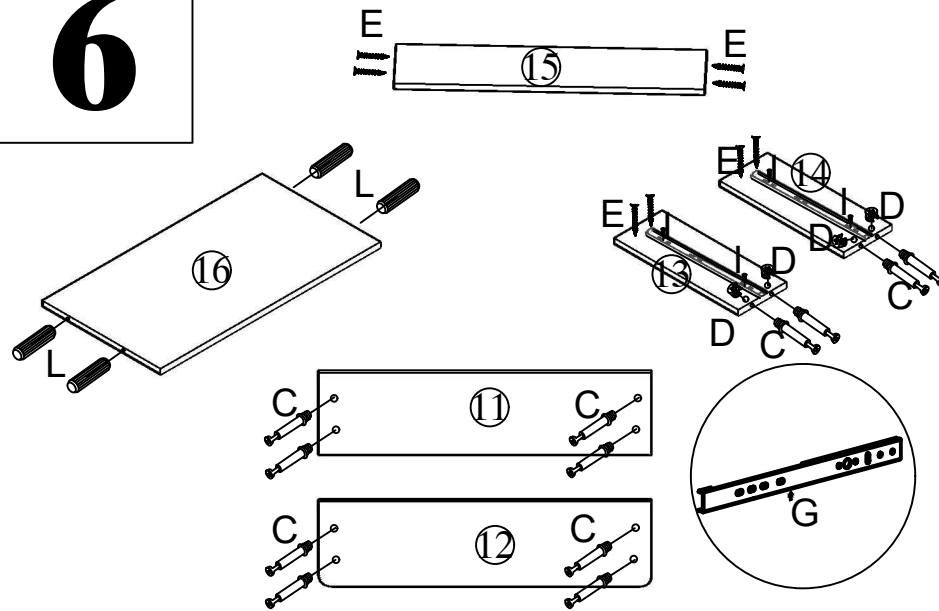


D

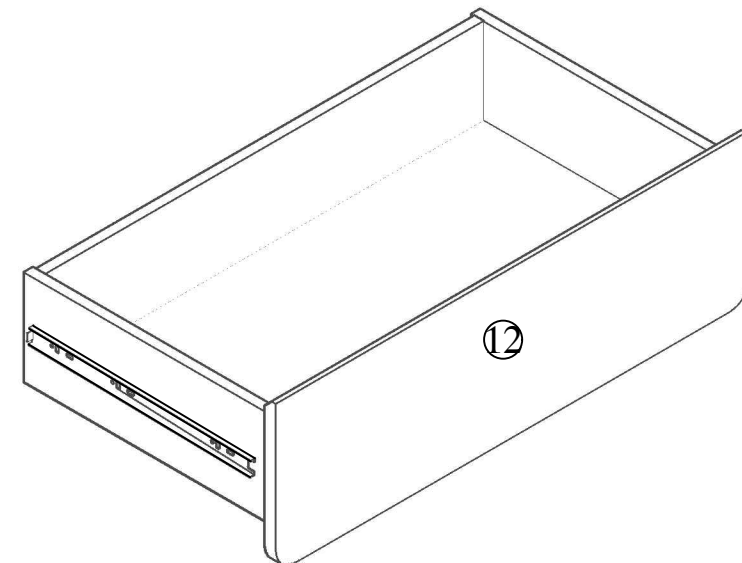
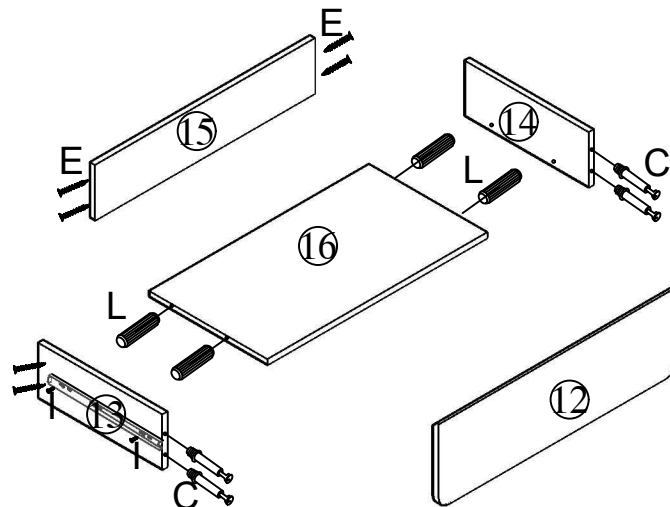
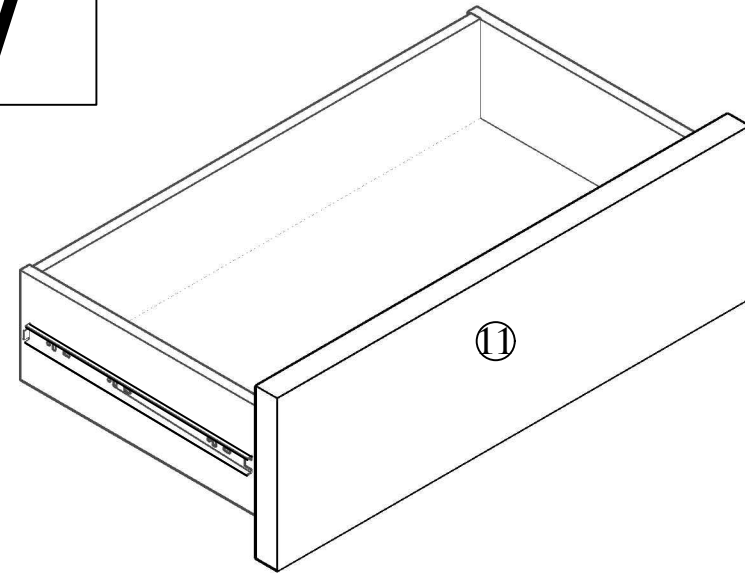


Assemble instructions Assmby Diagram

6



7



I



E



C



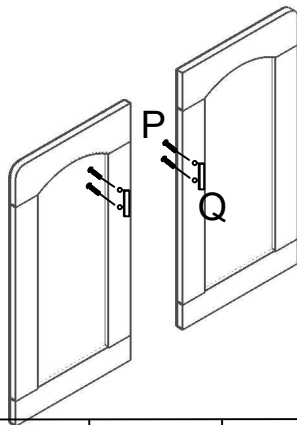
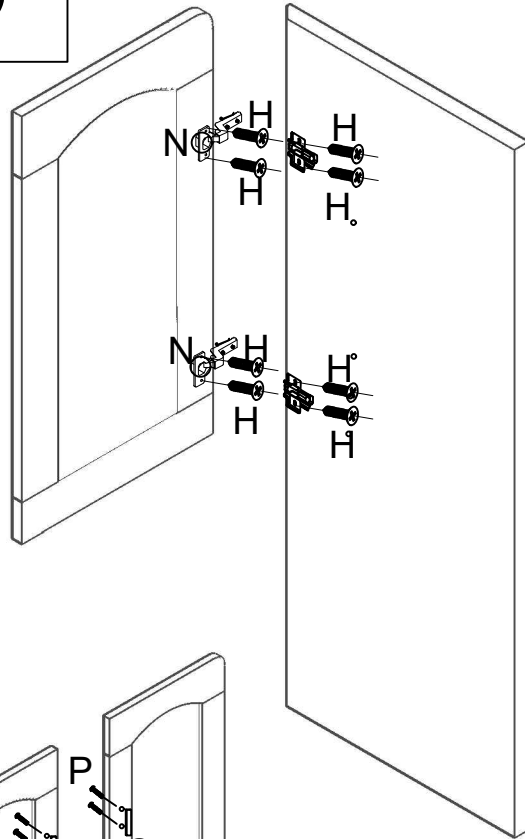
D



L



8



N



H



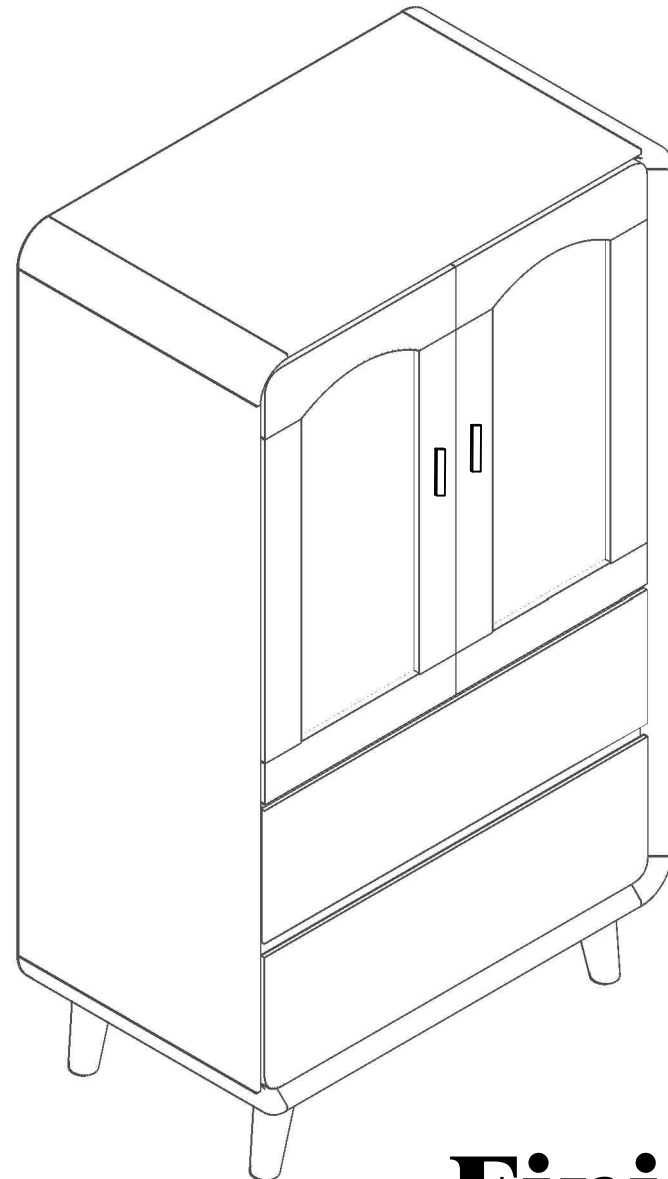
P



Q



9



Finish