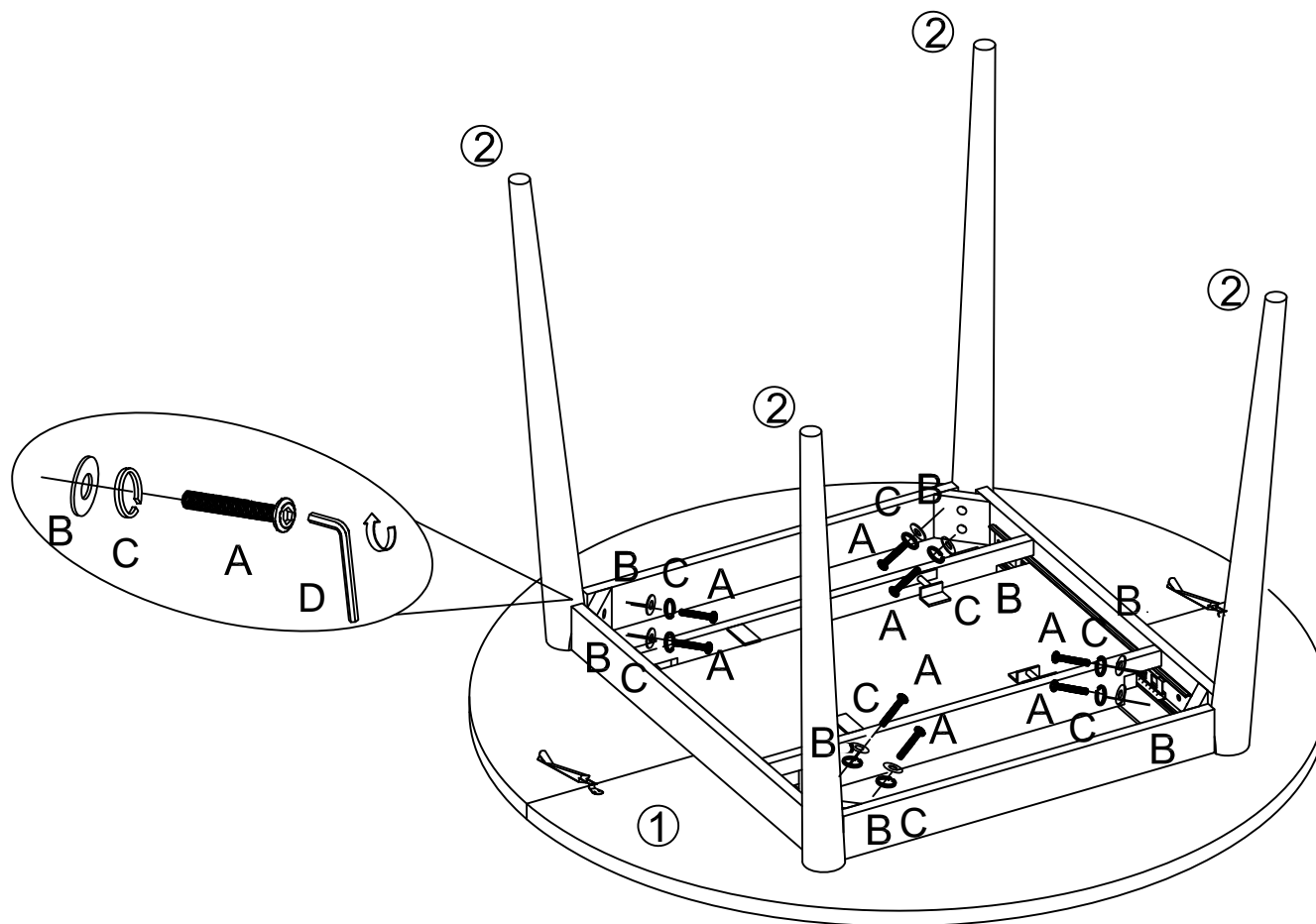






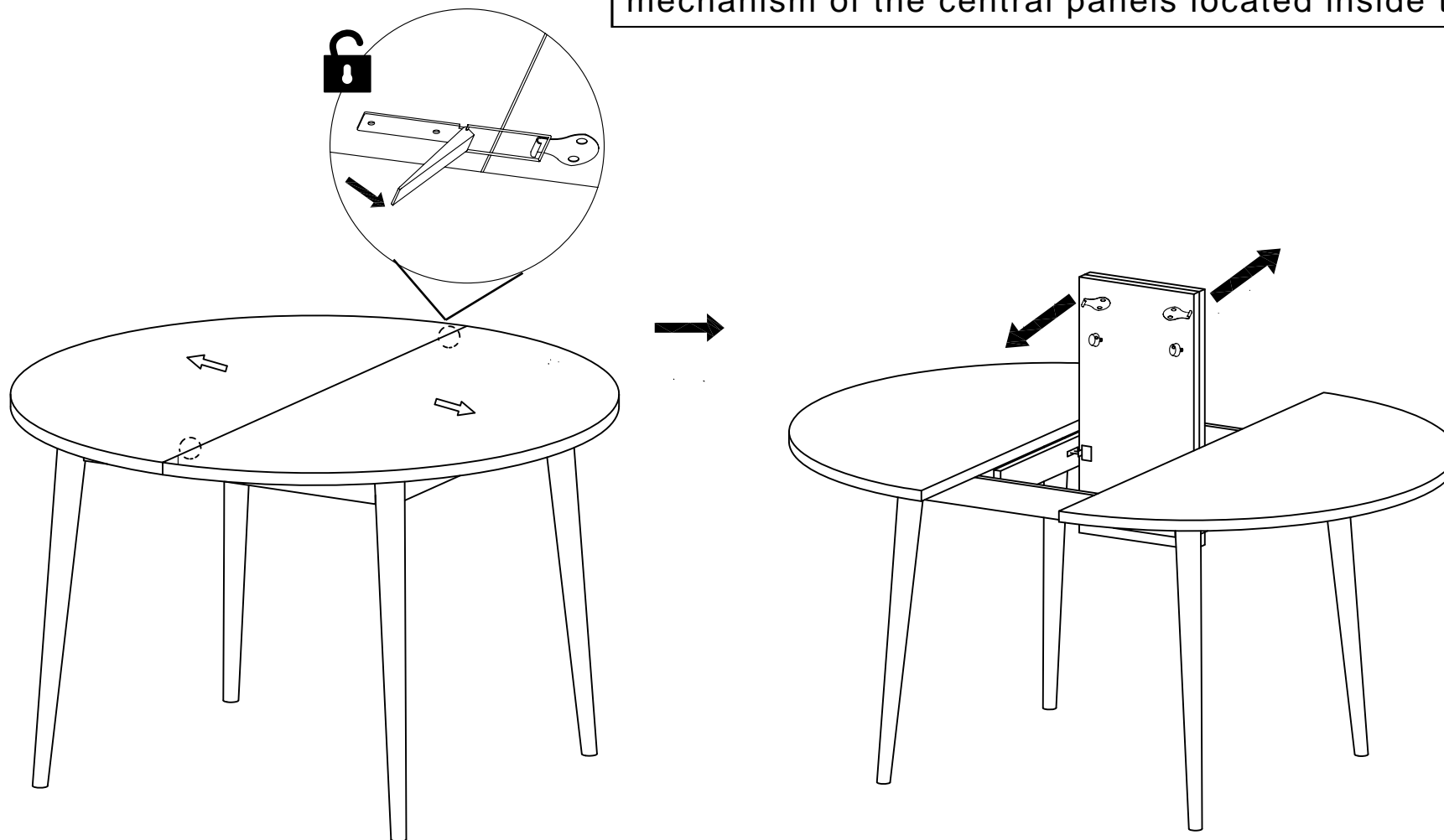
1



A	 M8*55mm	8	B	 Ø8*17mm	8	C	 Ø8*13mm	8	D	 M5mm	1
---	---	---	---	--	---	---	--	---	---	---	---

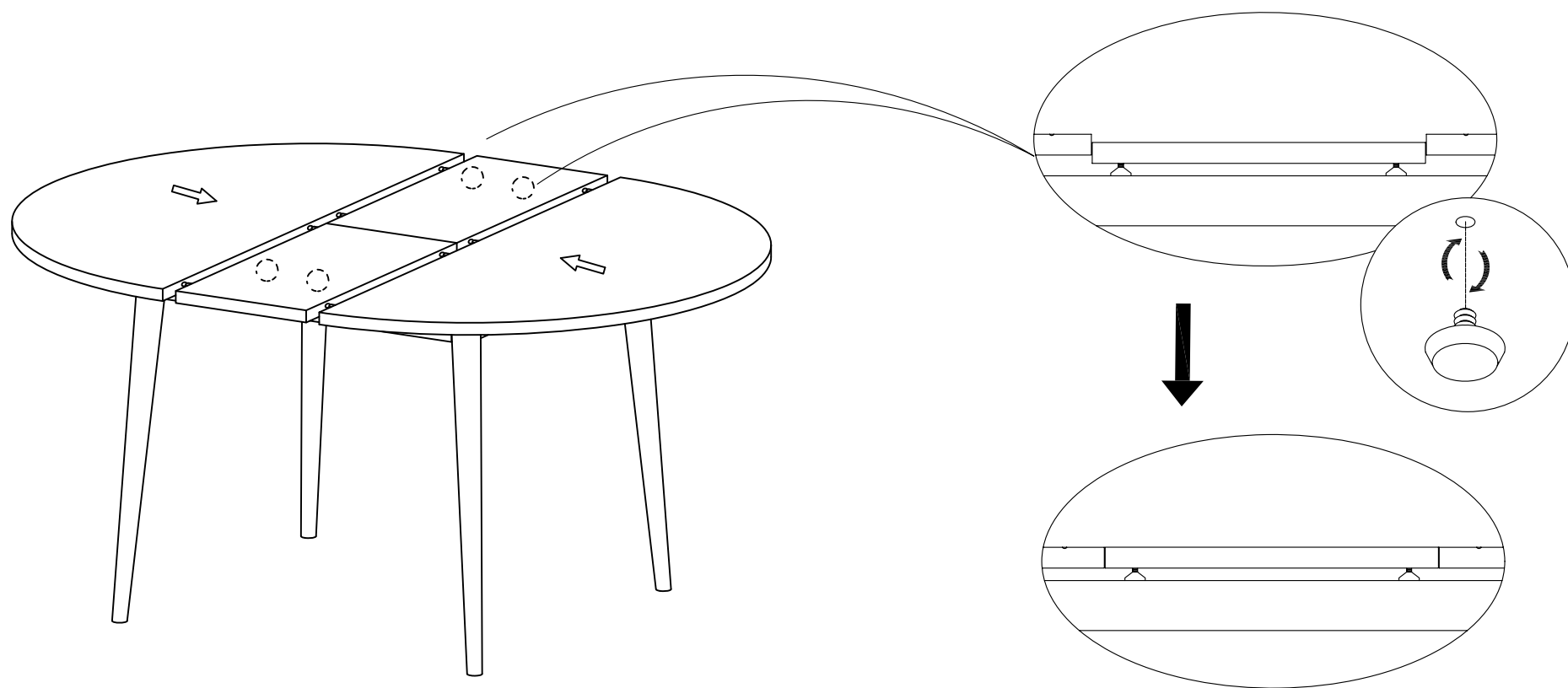
2

To install the extension, first open the center of the table by unlocking the 2 latches on each side. Next, gently unfold the mechanism of the central panels located inside the table.



3

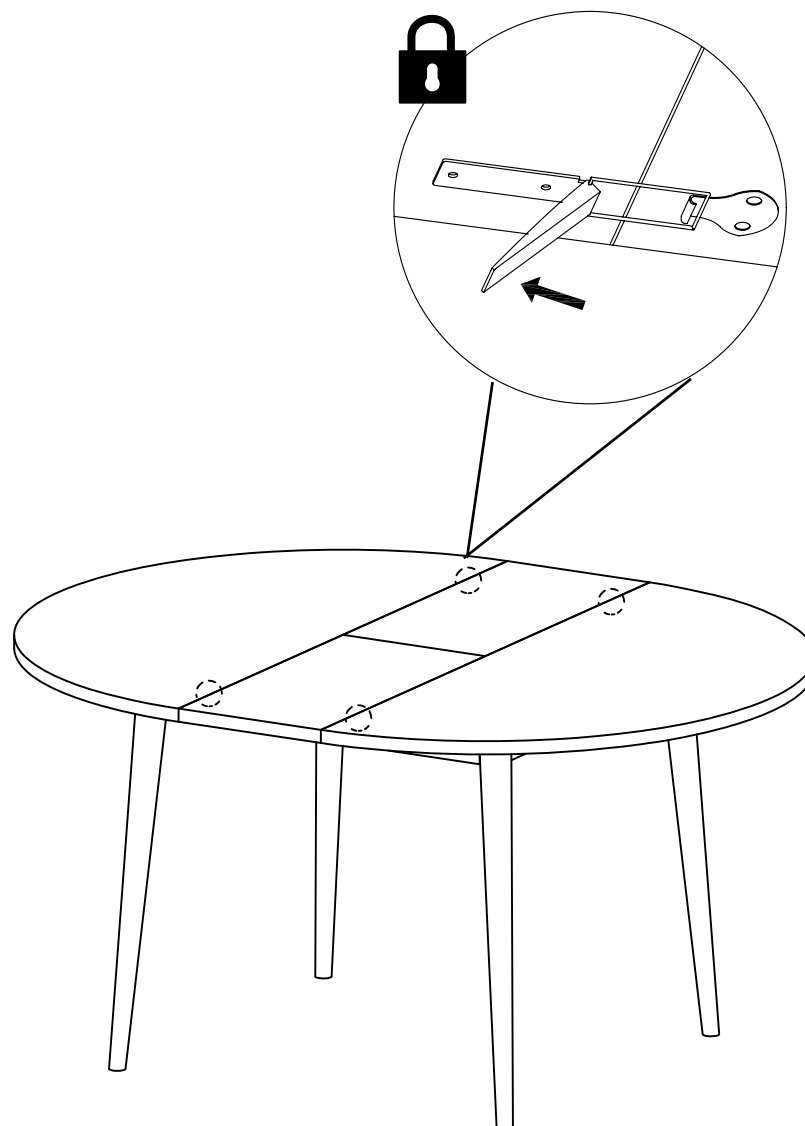
It's important to adjust the height of the central panels by tightening/loosening the screws so that the central panels are aligned with the panels on each side.



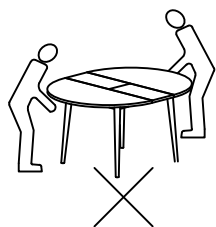
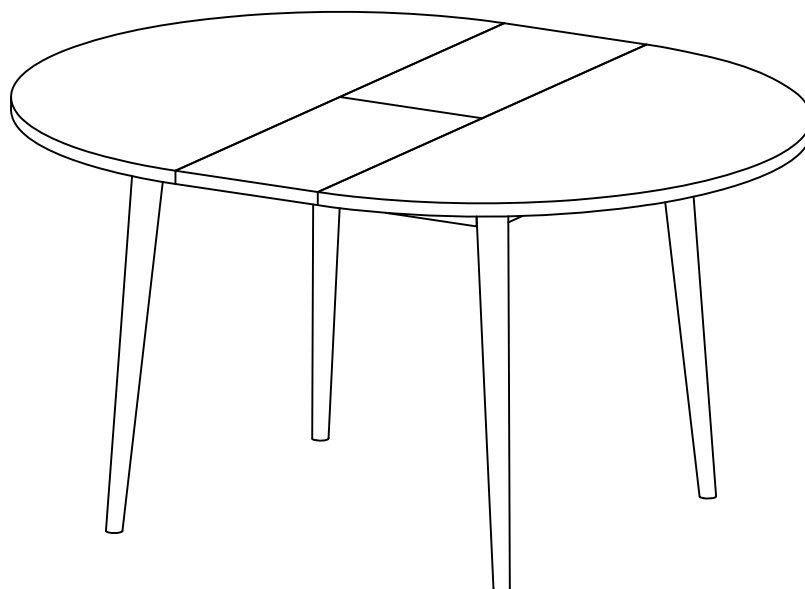
The central panels must be at the same level as the panels on each side.

4

Please close the 4 latches as shown.



5



ATTENTION: Please be sure
to lift the table as shown below.