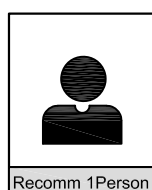
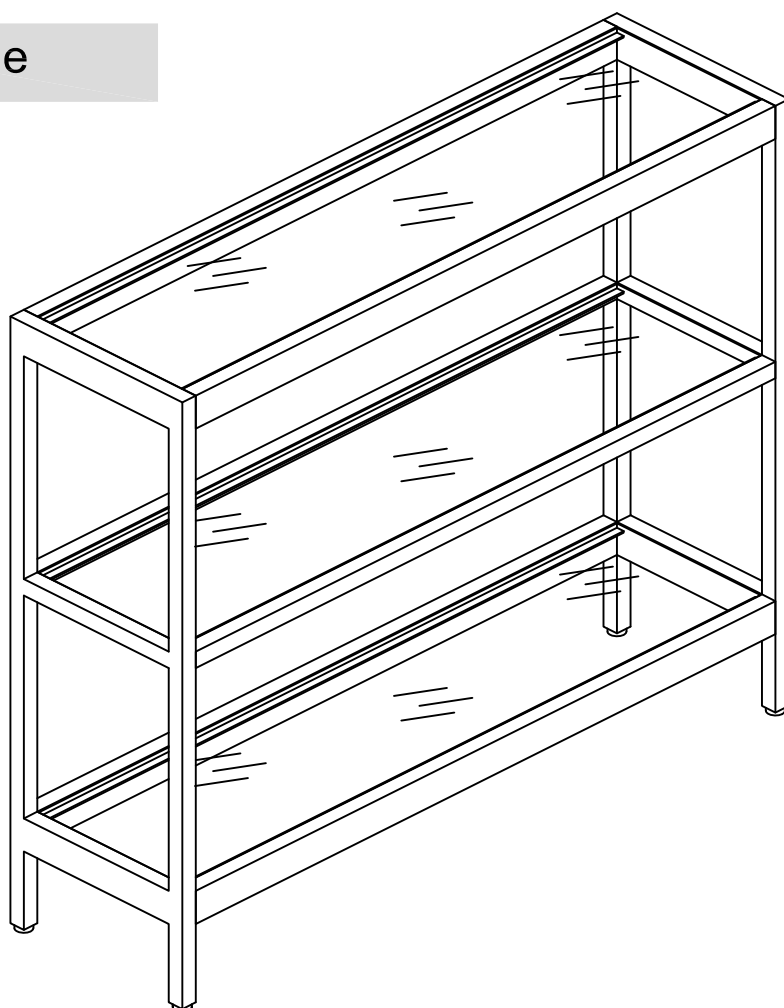


# Explore Life's Joy with Us

## Assembly Instruction

### Console Table

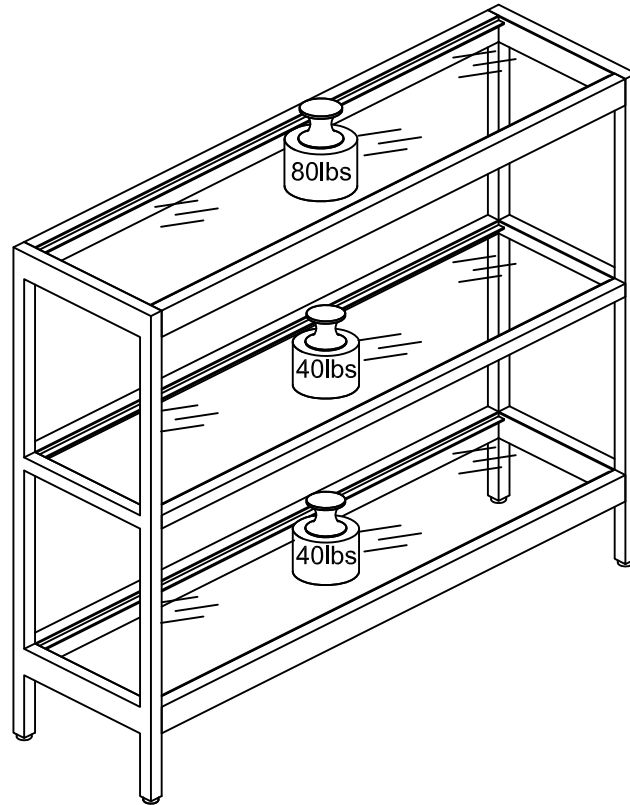


Recomm 1Person

00:30

Approx 30minutes

## Recommended Maximum Weight



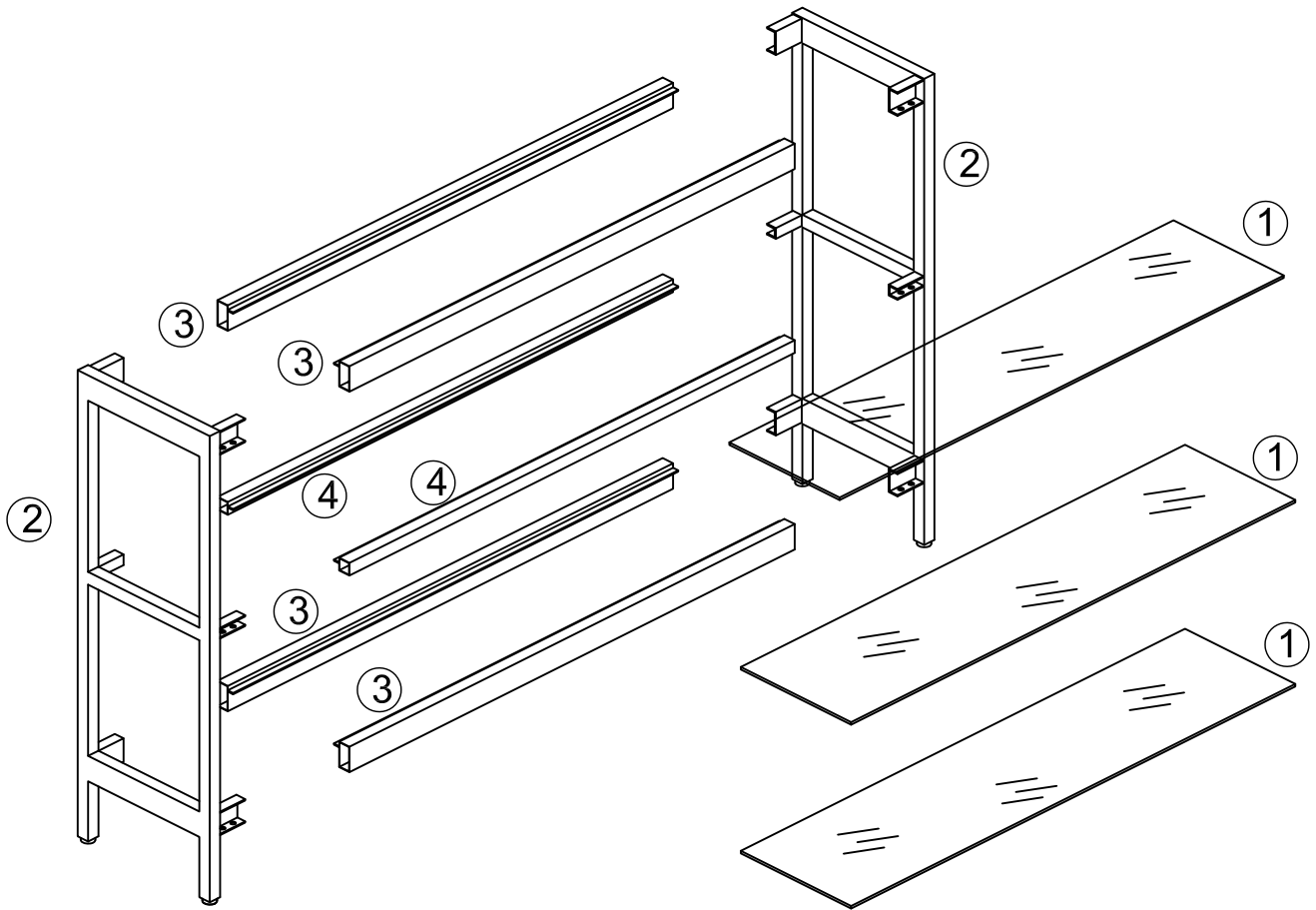
### **Read all instructions before using this product.**

1. This unit has been designed to support the maximum loads shown. Exceeding these load limits could cause sagging, instability, product collapse, and/or serious injury.
2. Avoid sharp objects and corrosive chemicals to prevent damage to the product or bodily injury.
3. Not intended for use in humid environment to prevent mildew, such as bathrooms, laundry areas and similar indoor locations. Do not use outdoors.
4. Don't allow anybody stand or climb on the unit. Serious or fatal crushing injuries can occur from furniture tip over.

### **Useful Hints before you start:**

1. Place soft packaging material on the floor to protect surface of product during assembly work.
2. It is important that each step is performed in correct order to avoid difficulties.
3. Align all screws with corresponding pre-drilled holes first and tighten.
4. Screws may become loose during long-term use, retighten them to ensure stability and security.
5. Using incompatible hardware might cause damage to product.

## Parts Identification



## Hardware Identification



Allen Bolt  
Ø1/4"\*12mm

A\*20



Adhesive Pad  
D8\*3mm

B\*18

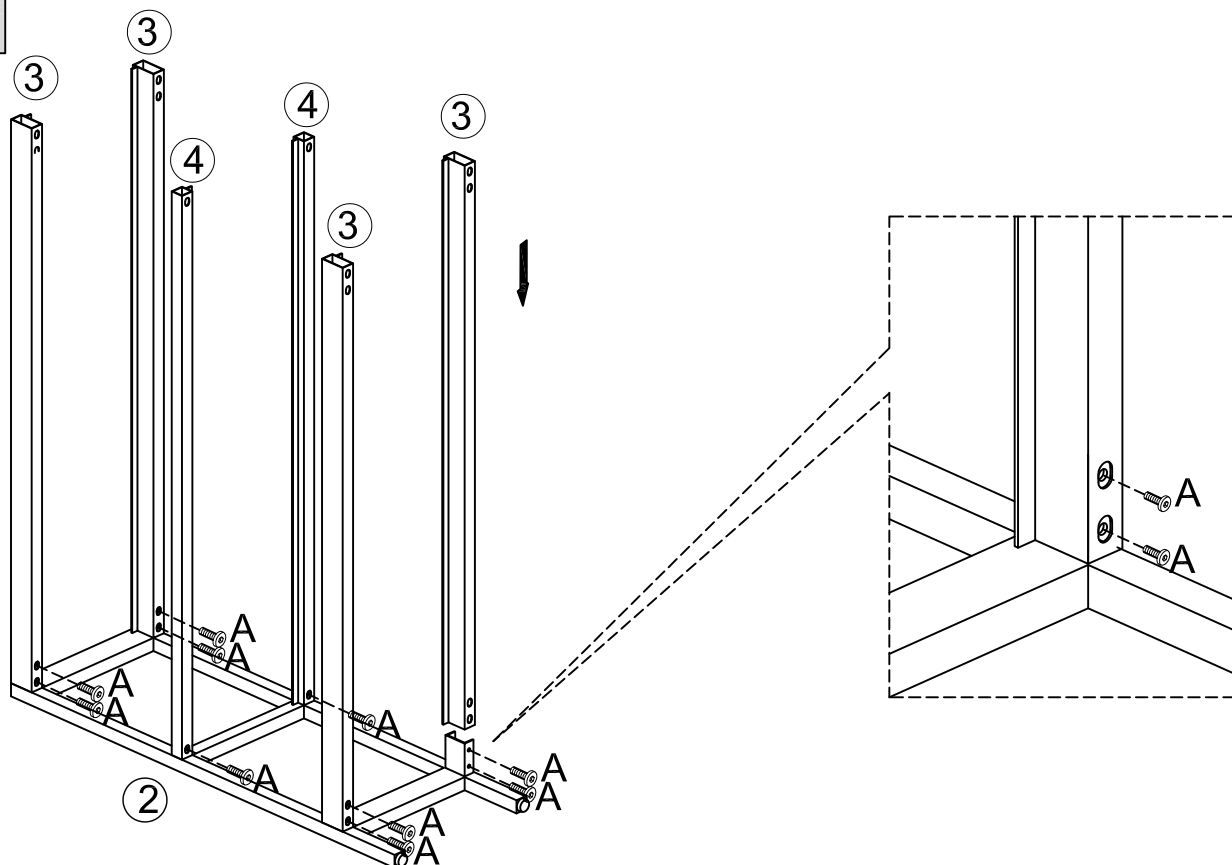



Allen Wrench  
M4

C\*1

Extra hardware is enclosed for your convenience.

## STEP1

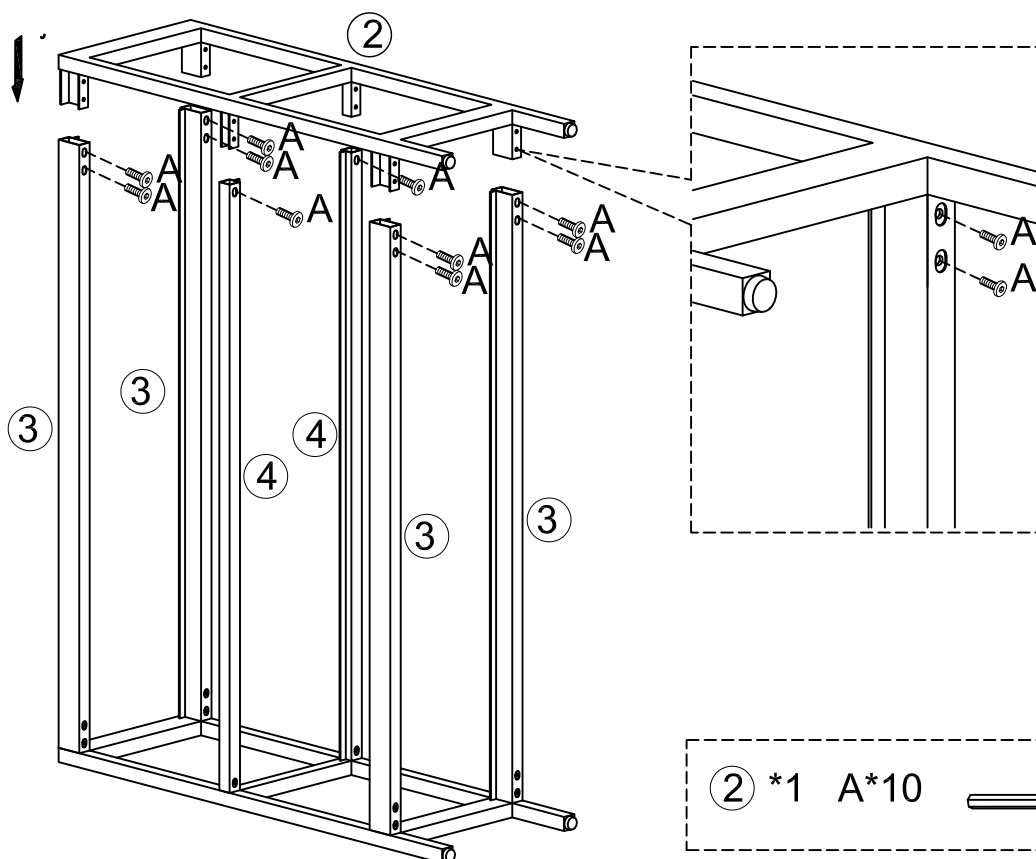


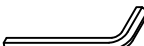
② \*1    ③ \*4    ④ \*2    A\*10     # C

## STEP2

Do not fully tighten all Allen Bolts until the end of STEP2.

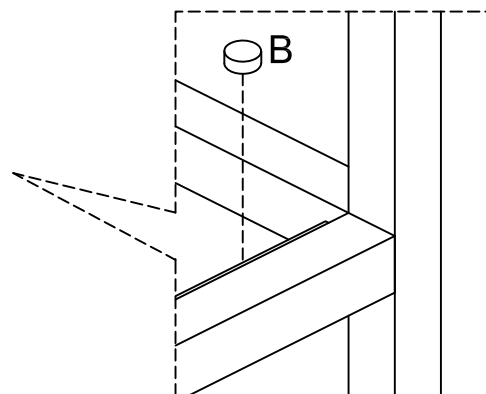
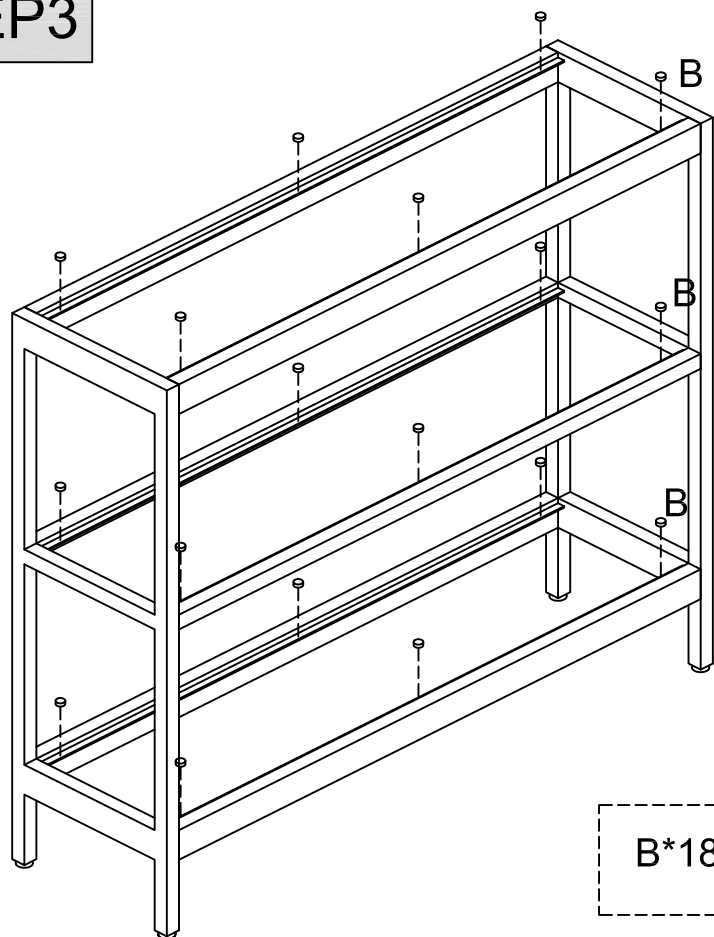
Do not fully tighten all Allen Bolts before all screws in position.



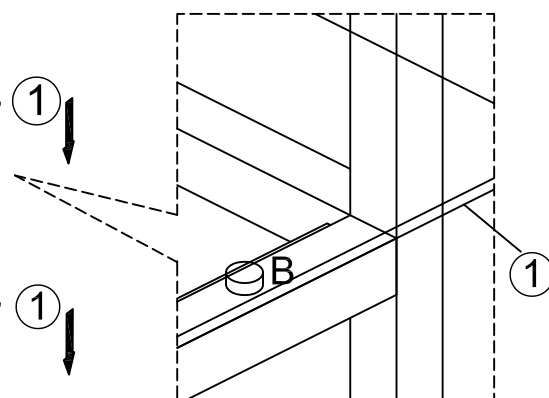
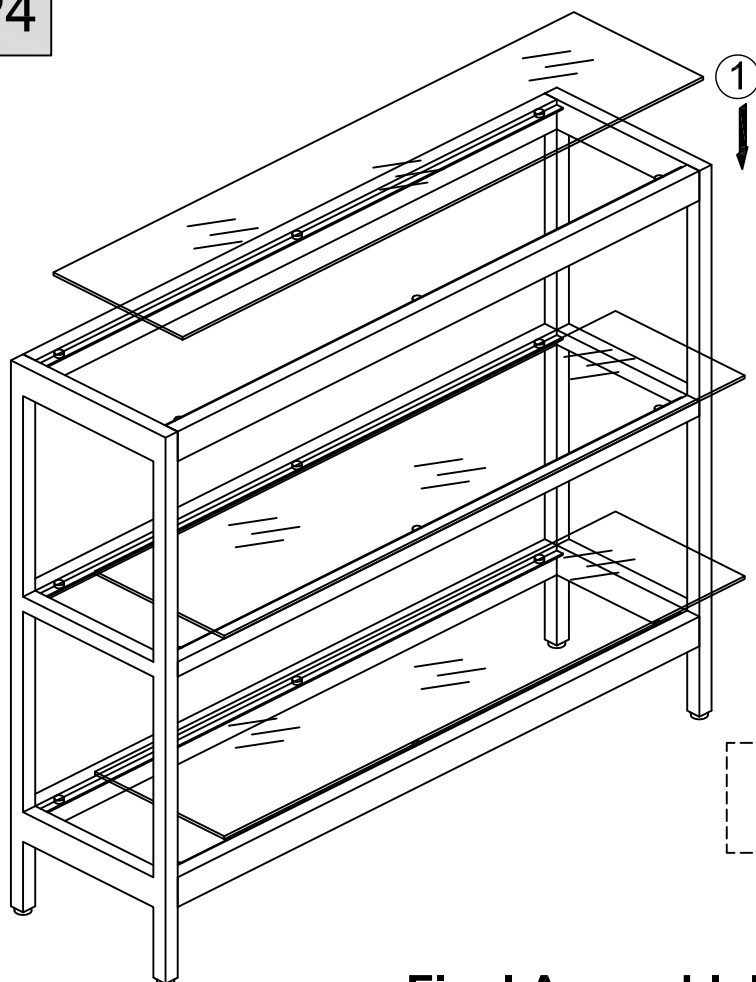
② \*1    A\*10     # C

Fully tighten all Allen Bolts using ( D ) Allen Wrench at this time.

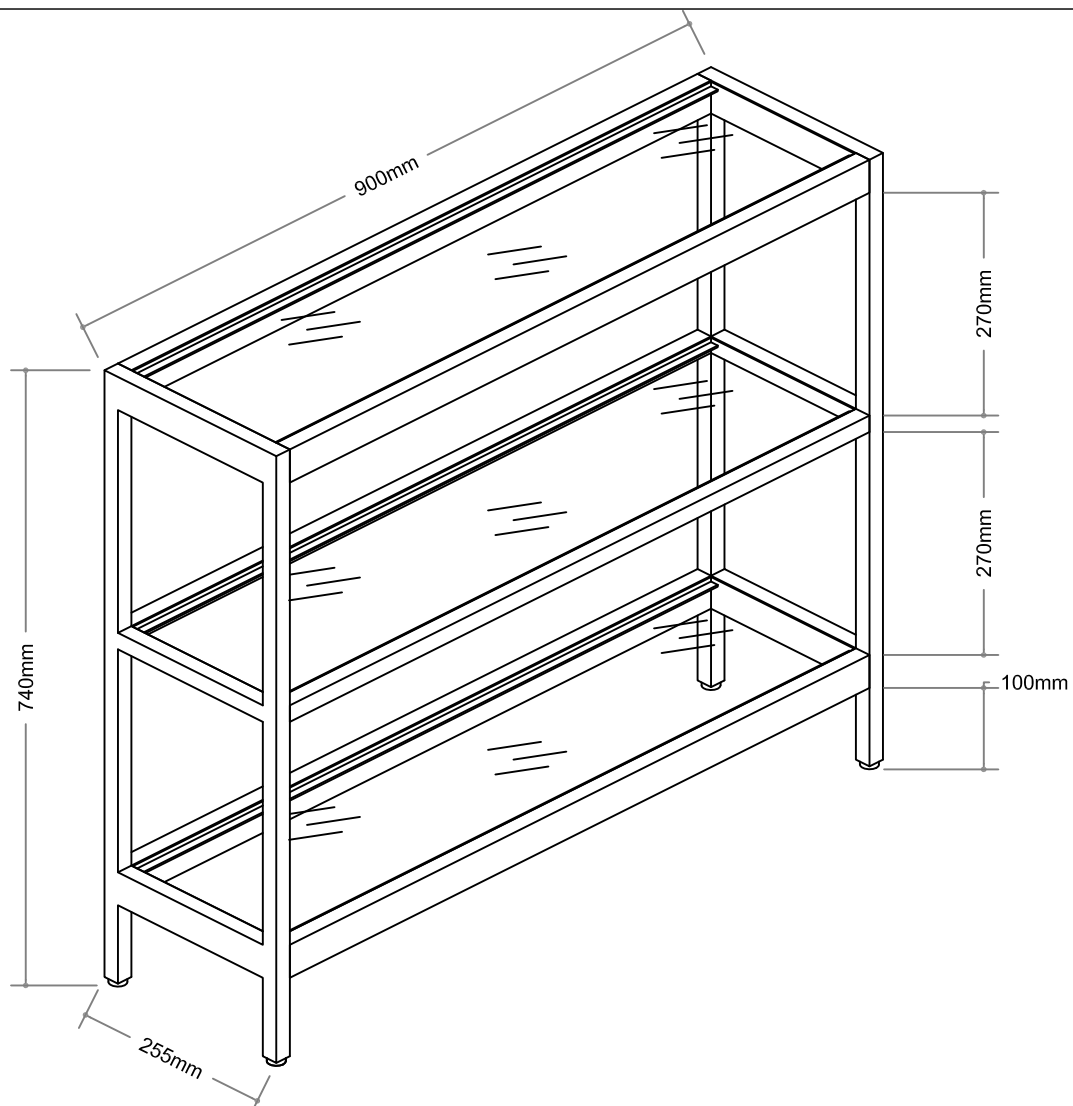
# STEP3



# STEP4



**Final Assembly!**



MADE IN CHINA