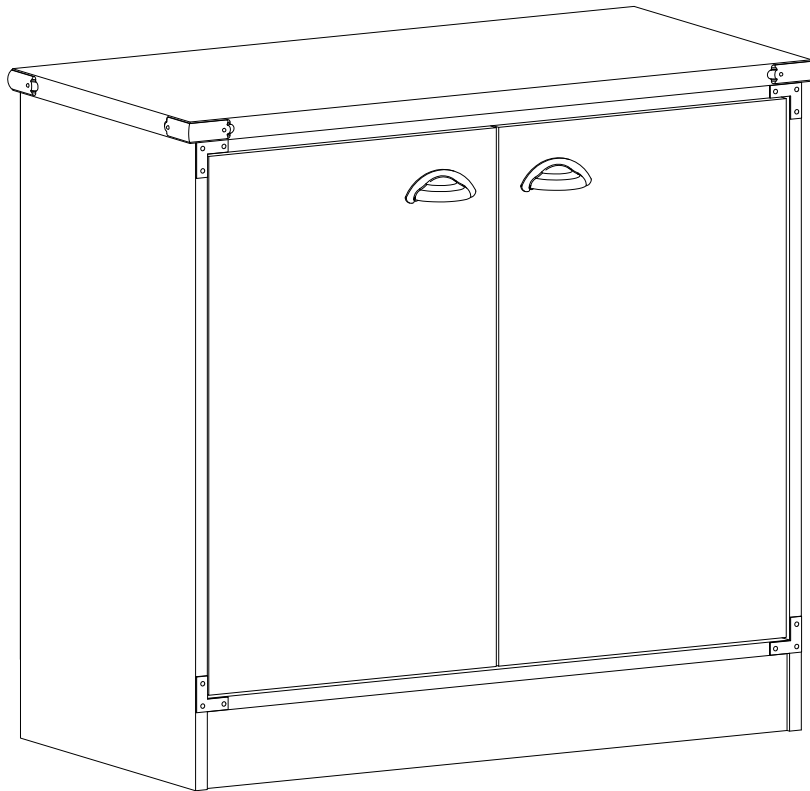


ASSEMBLY INSTRUCTIONS

ITEM#: BX4500

Important Safety Instructions:

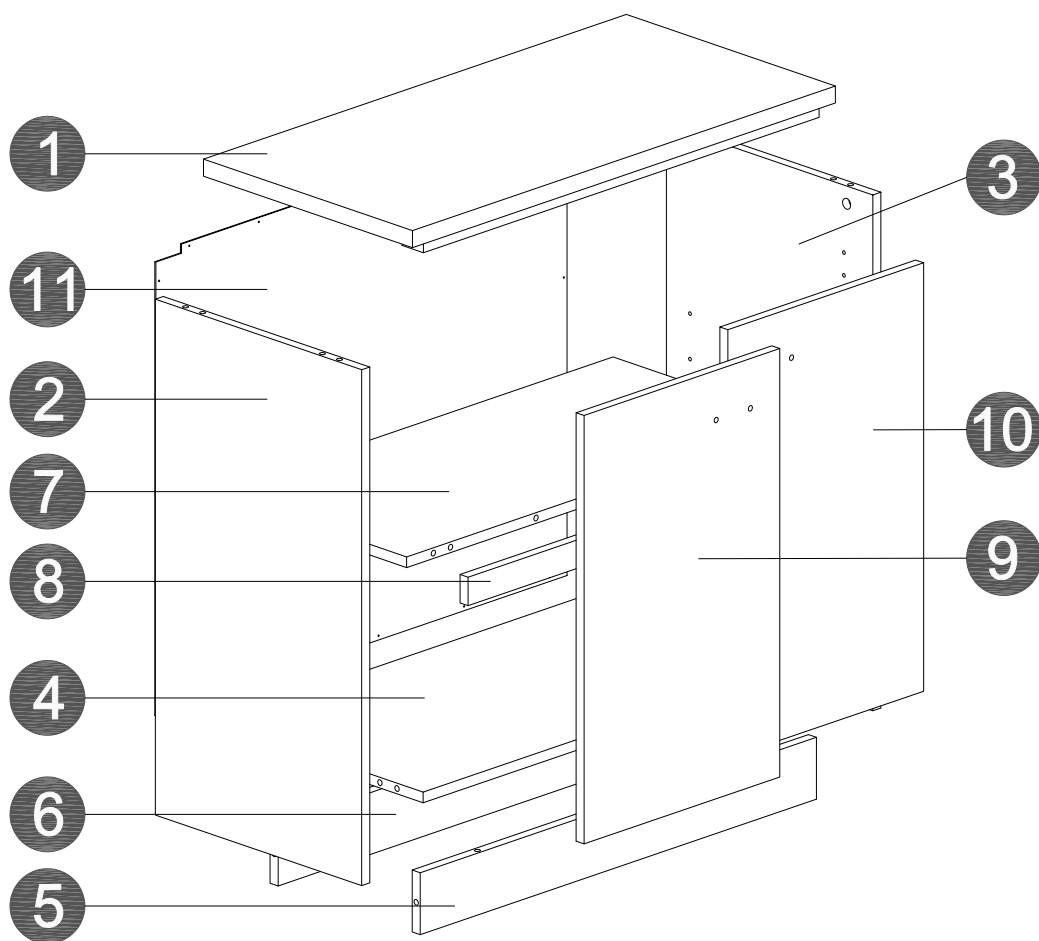
- Please read all instructions before beginning assembly
- Please make sure receive all the parcels to start the assembly
- For your safety and convenience, assembly by two people is recommended
- Use the parts and hardware lists to identify and separate each of the components included
- Save all packing materials until assembly is completed to avoid the accidental discarding of smaller parts or hardware



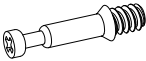


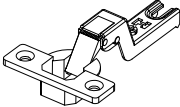
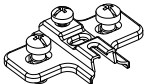

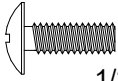

THANK YOU FOR PURCHASING


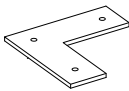

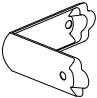
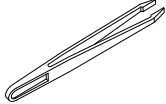
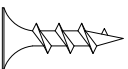
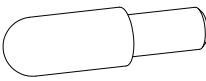
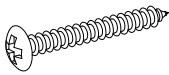
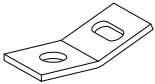
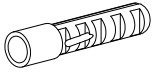

PARTS LIST

1 X1	2 X1	3 X1	4 X1	5 X1
6 X1	7 X1	8 X1	9 X1	10 X1
11 X1				



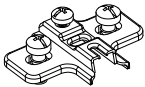
HARDWARE LIST

Name	Part	Qty.	Spare
A		13	1
B		13	1
C		20	1
D		4	
E		4	
F		2	
G	 1/2" Screw	4	1
H	 3/4" Nail	20	2

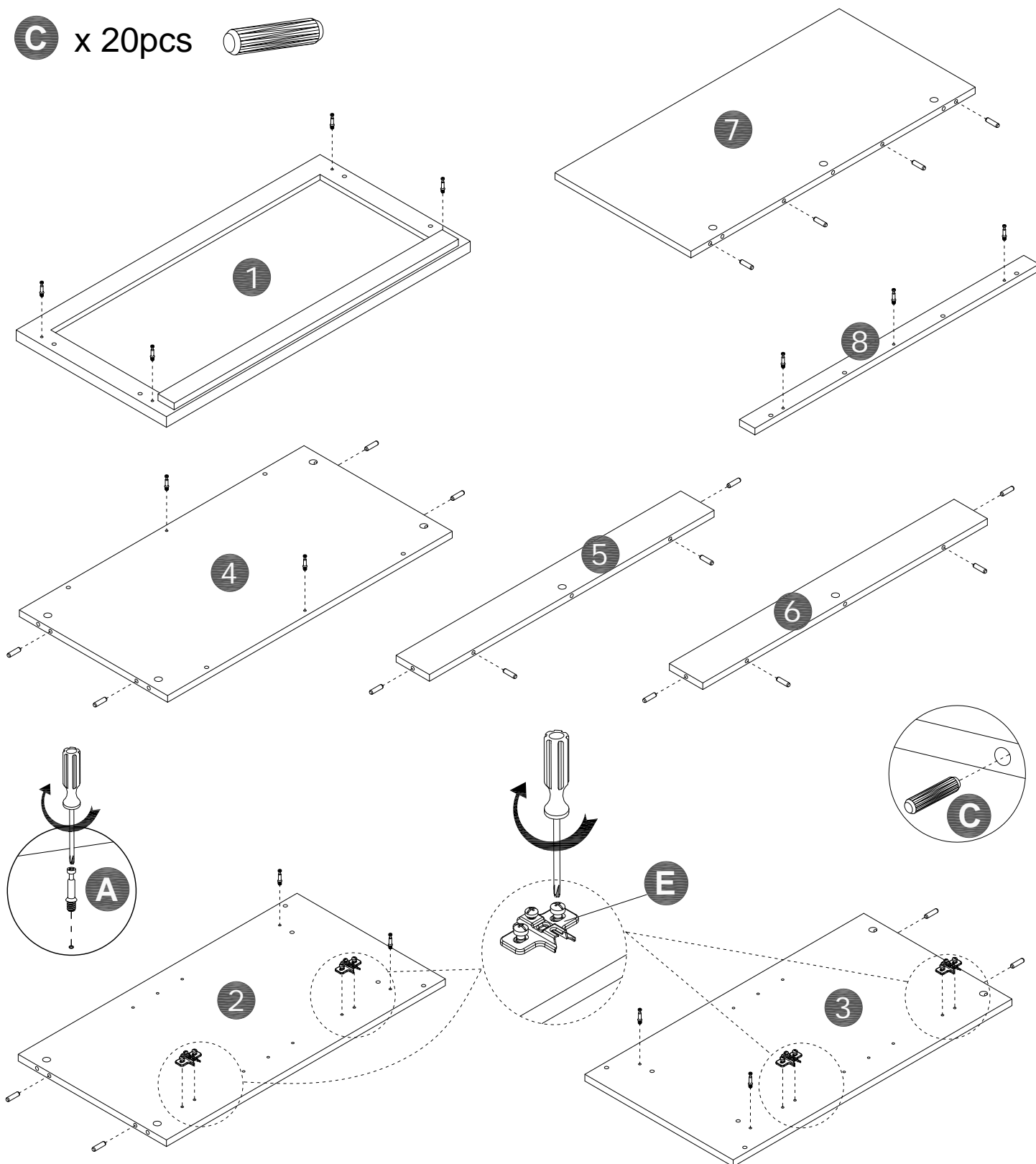
Name	Part	Qty.	Spare
O		12	2
P		4	
R	 5/6" nail	8	2
S		4	
U		1	
Z	 5/8" Screw	8	1
AA		4	
U1		2	
U3		2	
U4		1	
U5		1	

STEP 1

A x 13pcs 

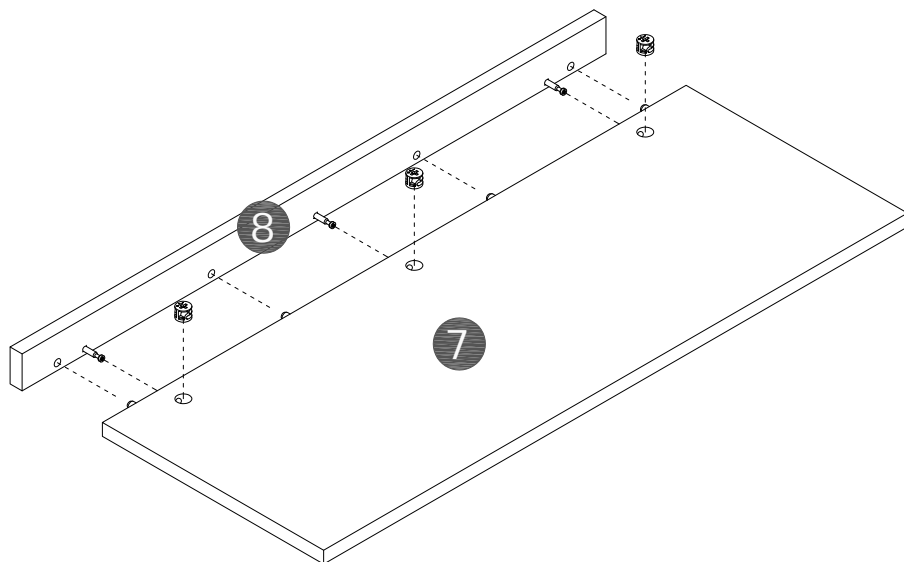
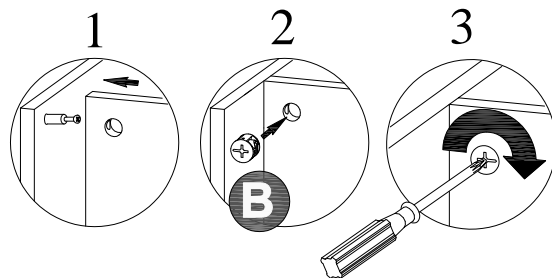
E x 4pcs 

C x 20pcs 



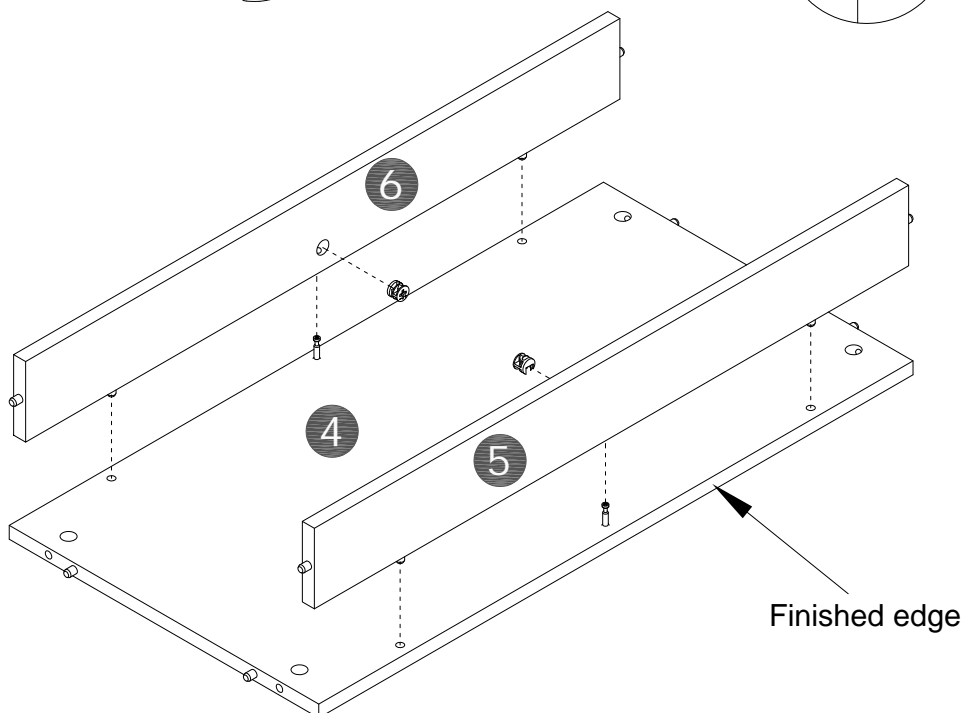
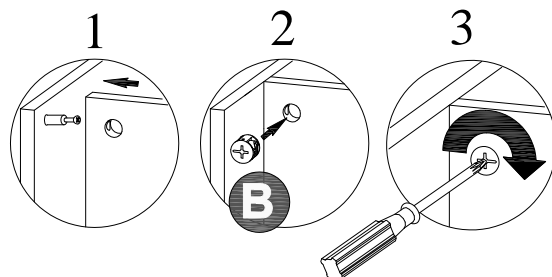
STEP 2

B x 3pcs



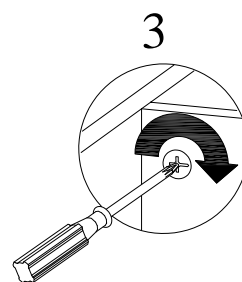
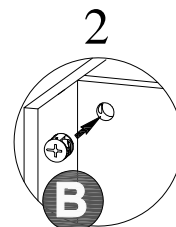
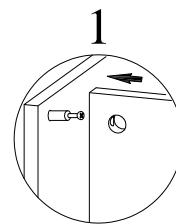
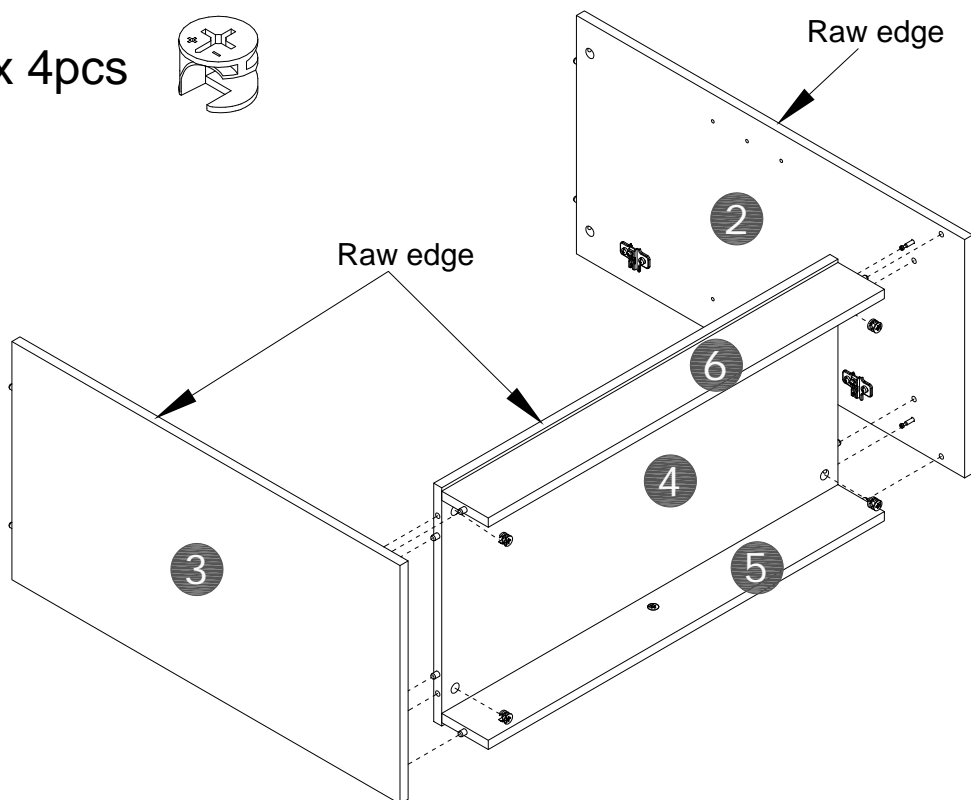
STEP 3

B x 2pcs



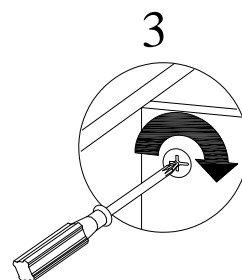
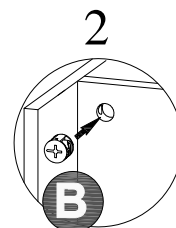
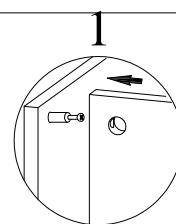
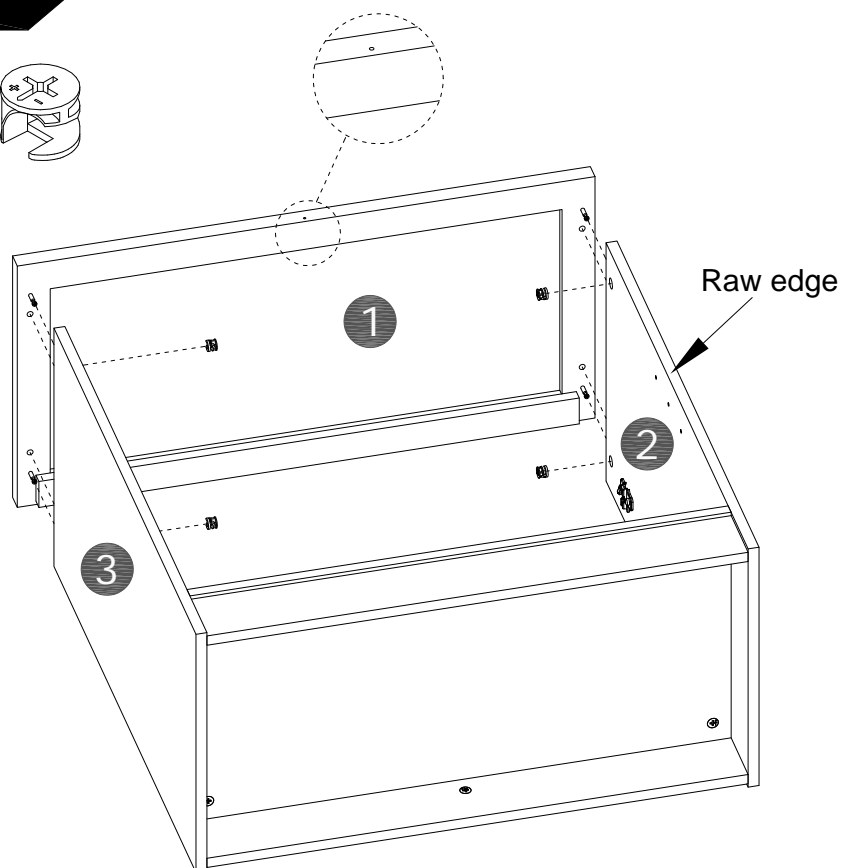
STEP 4

B x 4pcs



STEP 5

B x 4pcs



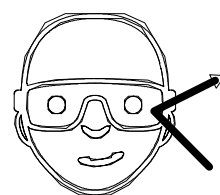
STEP 6

H x 20pcs



No Screw

Raw Side

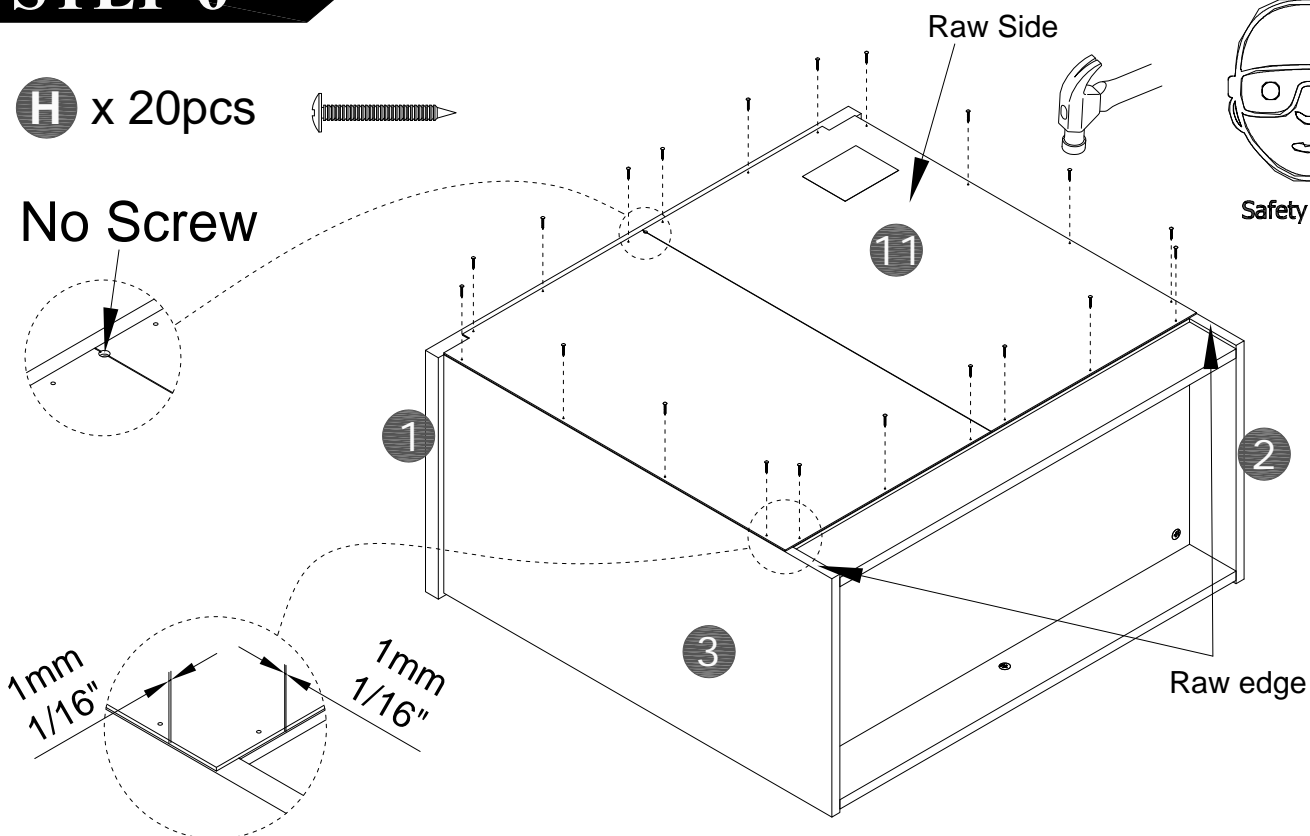


Safety glasses

1mm
1/16"

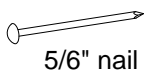
1mm
1/16"

Raw edge



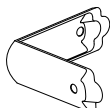
STEP 7

R x 4pcs

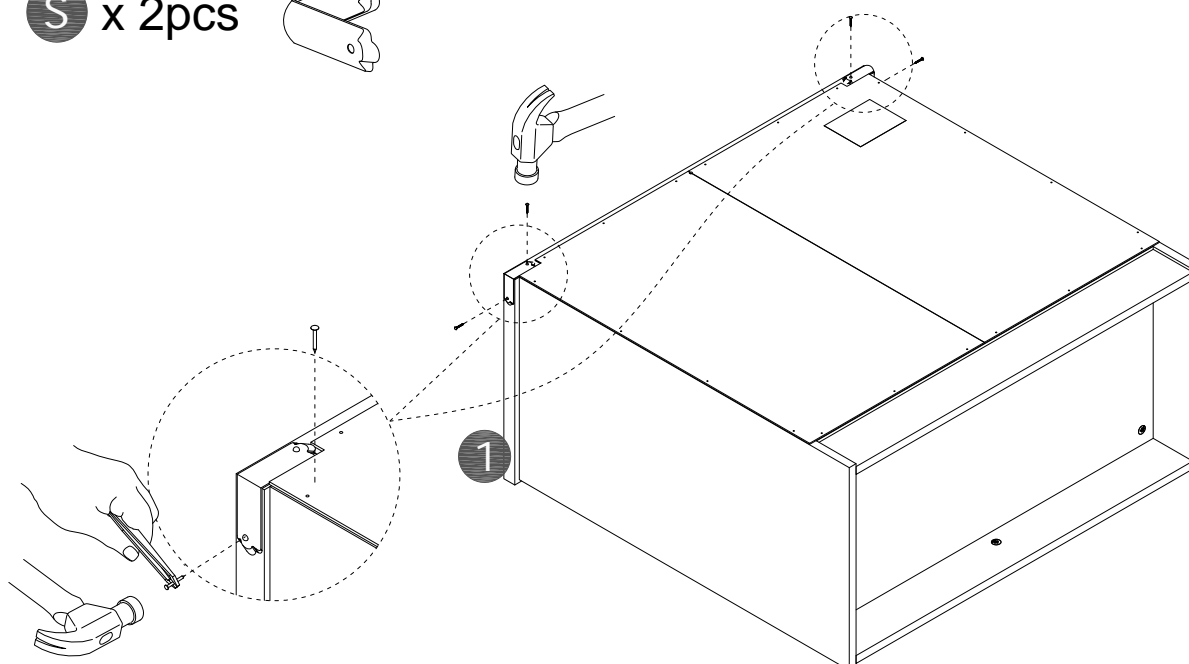
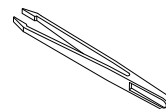


5/6" nail

S x 2pcs



U

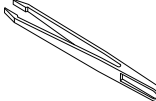


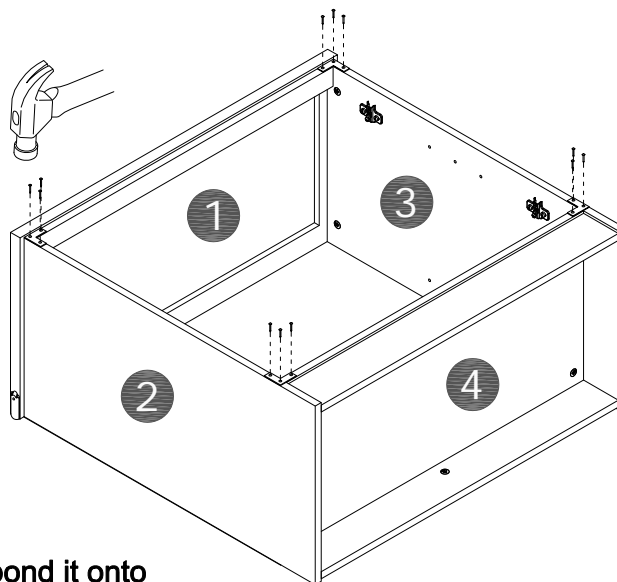
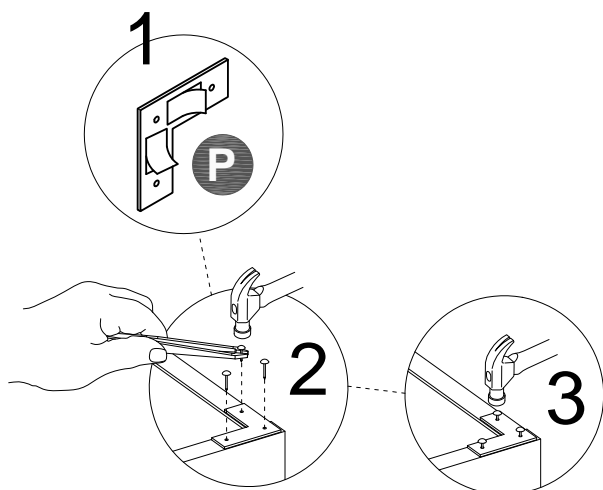
STEP 8

With assistant carefully flip unit over.

O x 12pcs 

P x 4pcs 

U 

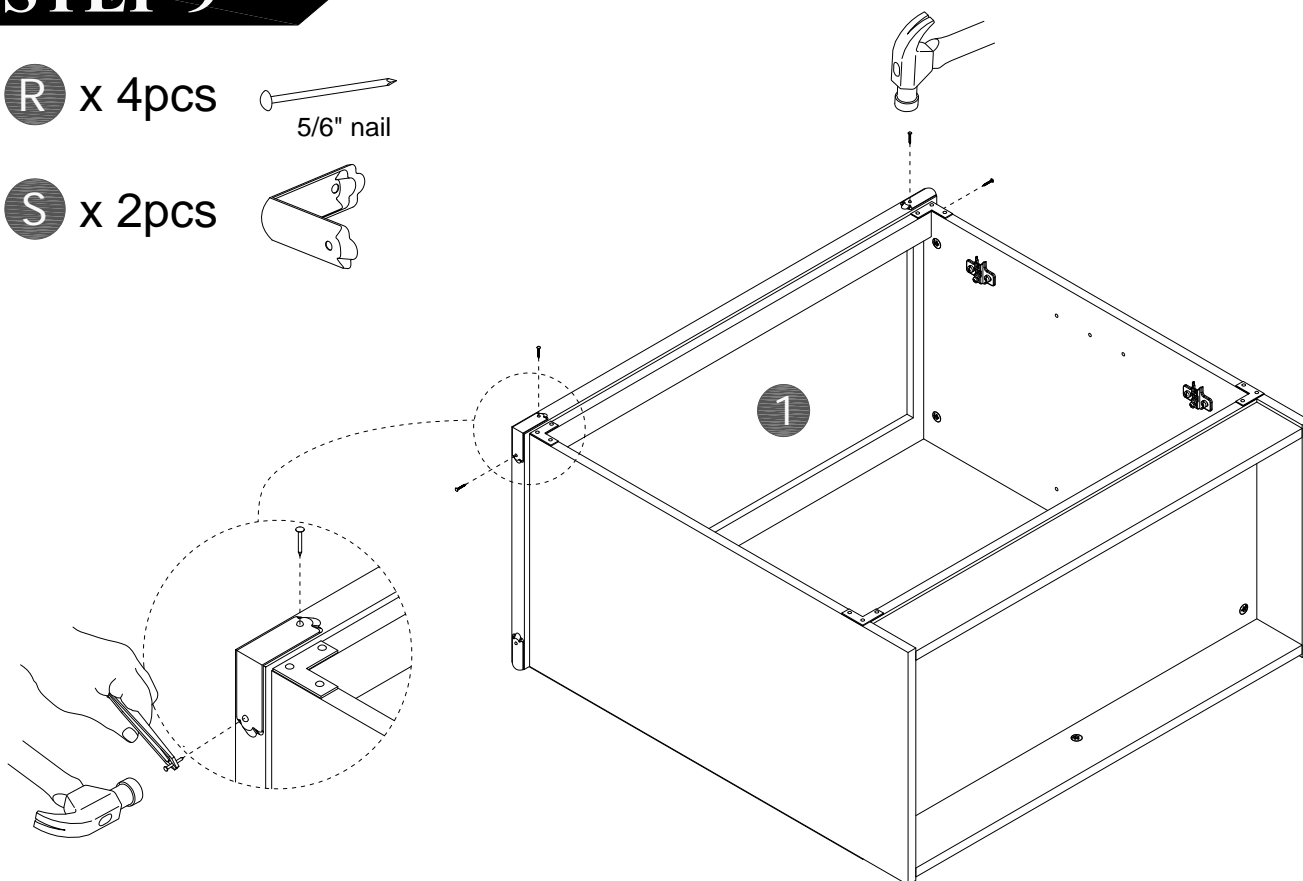


Peel off the adhesive sticker's protective paper and bond it onto the designated position before secure with nails.

STEP 9

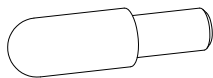
R x 4pcs 
5/6" nail

S x 2pcs 

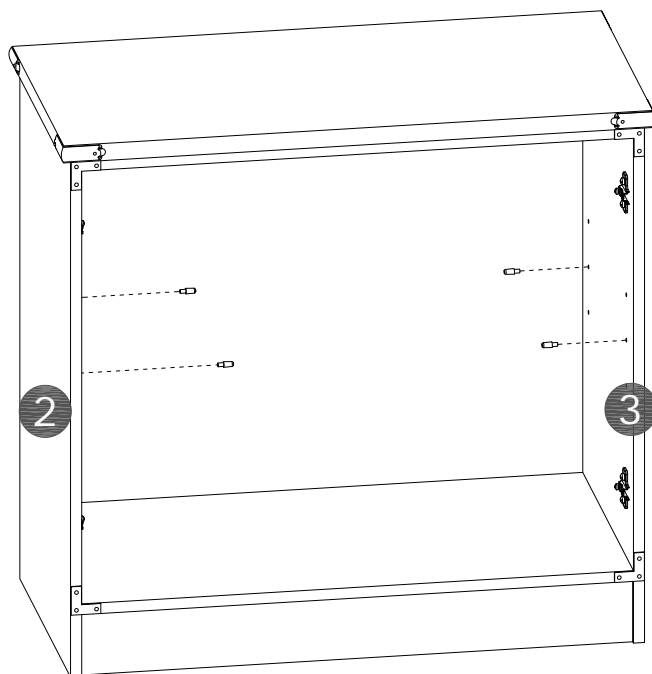


STEP 10

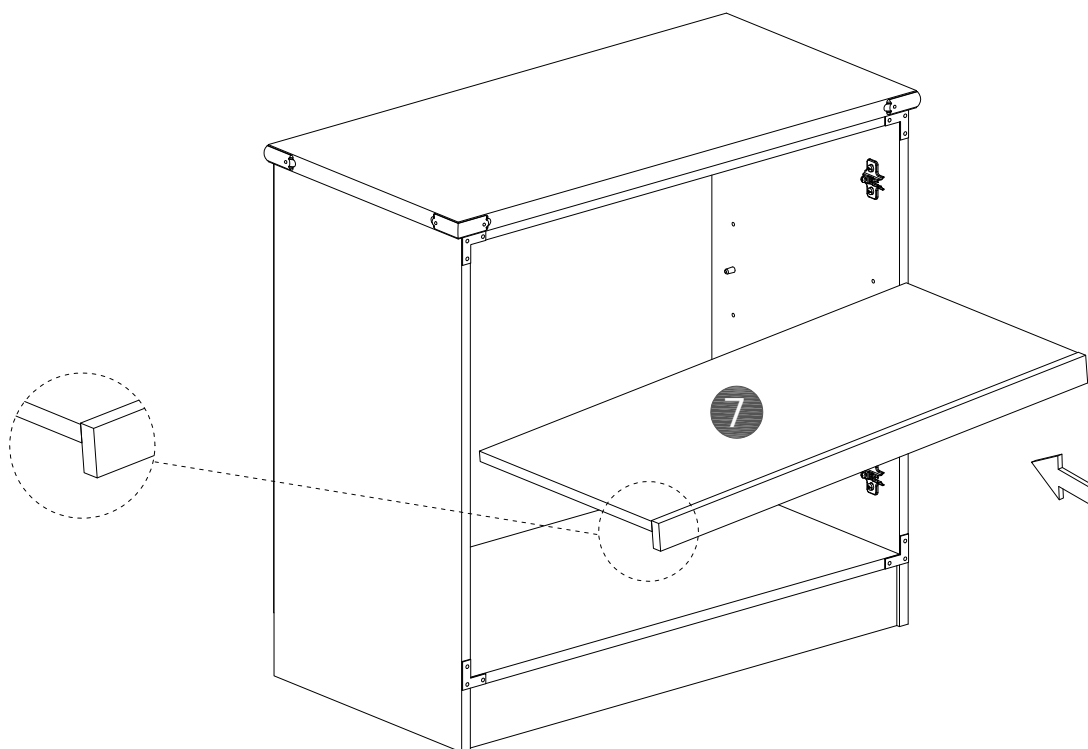
AA x 4pcs



With assistant carefully stand unit up.

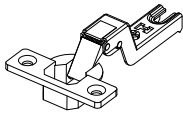


STEP 11

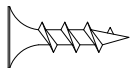


STEP 12

D x 4pcs



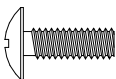
Z x 8pcs



F x 2pcs

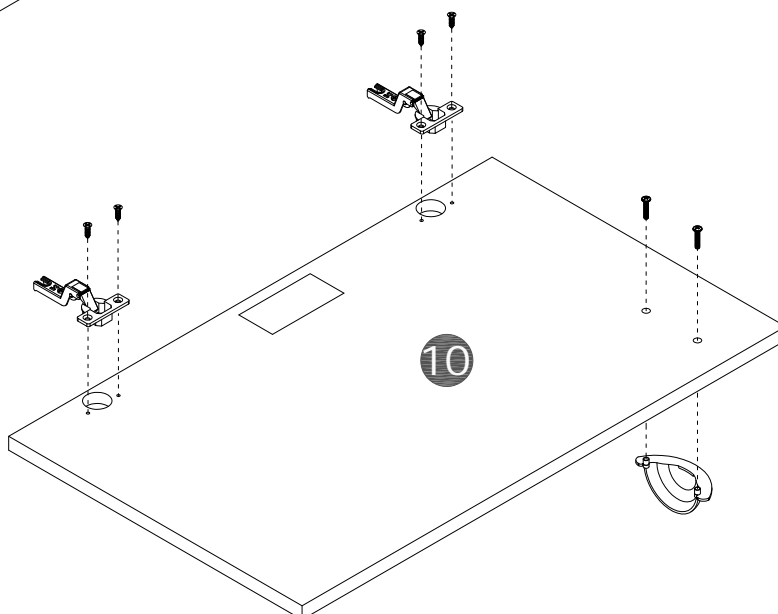
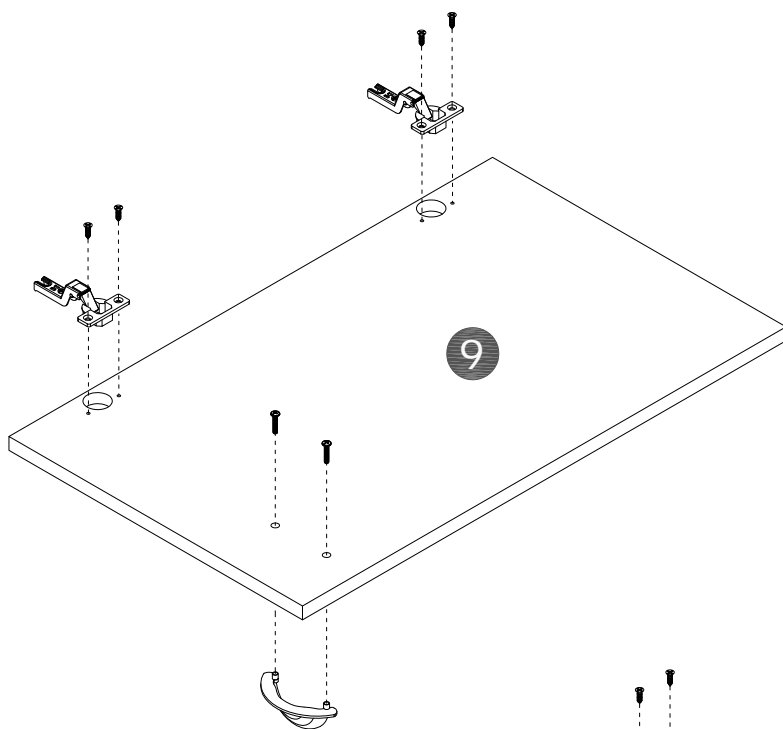


G x 4pcs



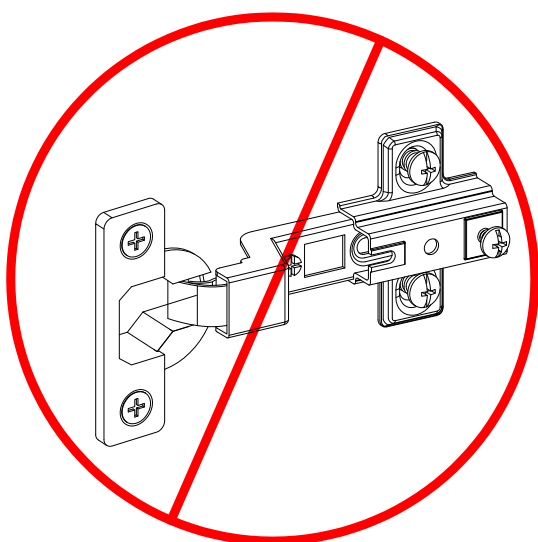
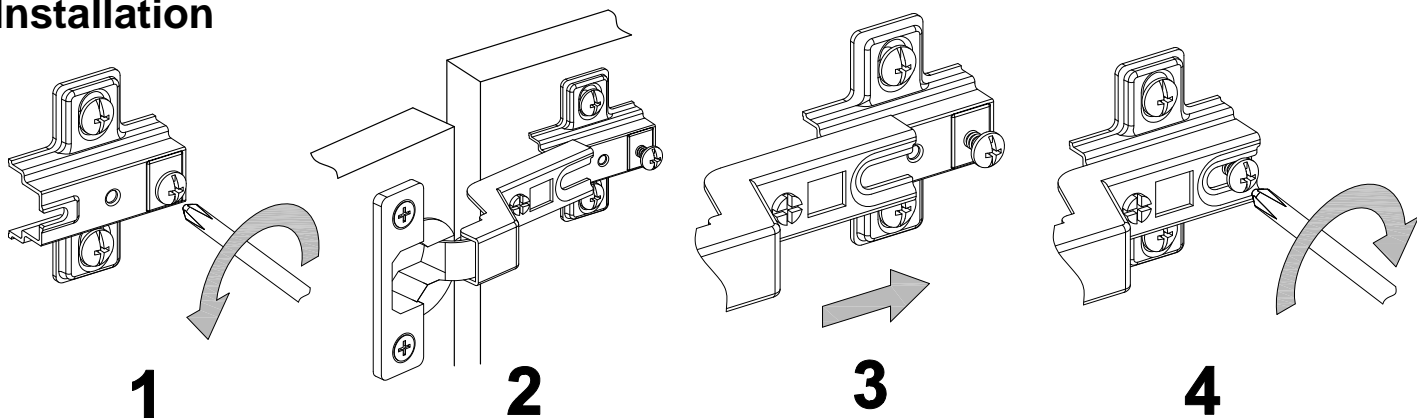
WARNING

Caution, Storing electronic equipment may result in equipment overheating. Shelves located behind doors are not intended for storing electronic equipment. Placing electronic equipment in this area may result in equipment overheating

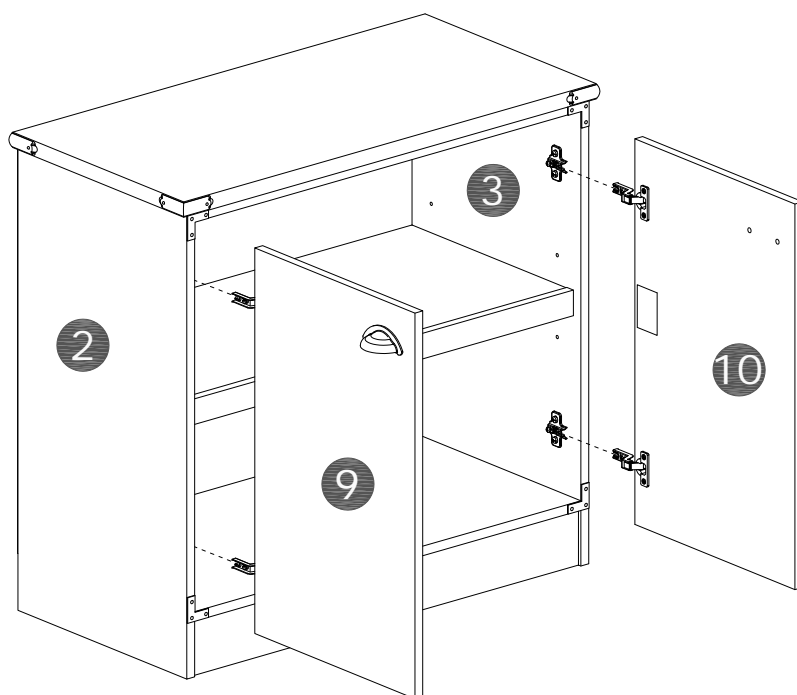
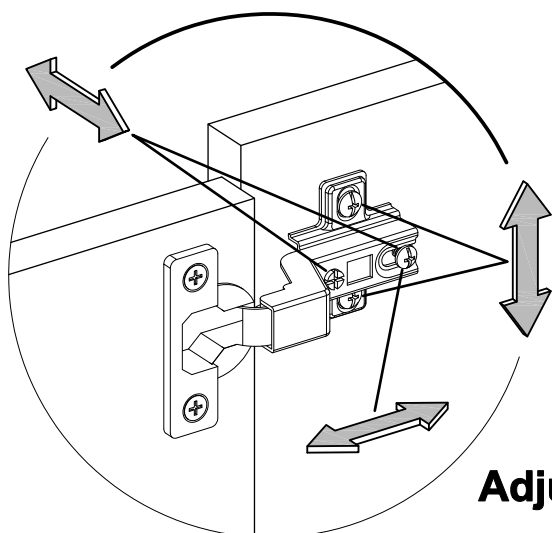


STEP 13

Installation

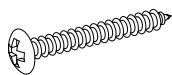


**DO NOT Insert
Hinge beneath mount**

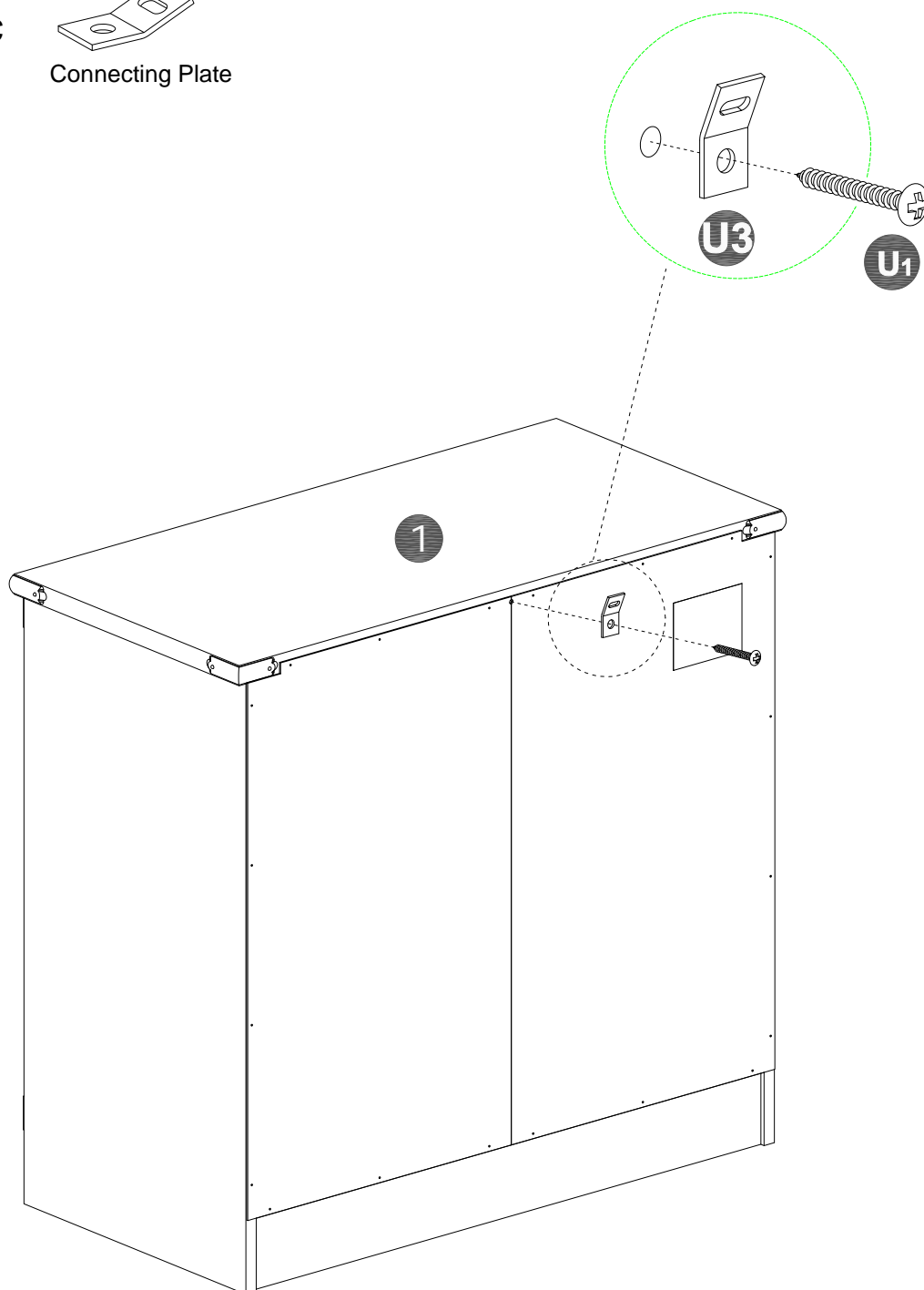
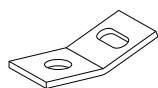


STEP 14

U₁ x 1pc

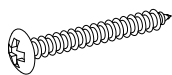


U₃ x 1pc
Connecting Plate

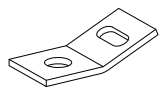


STEP 15

U₁ x 1pc

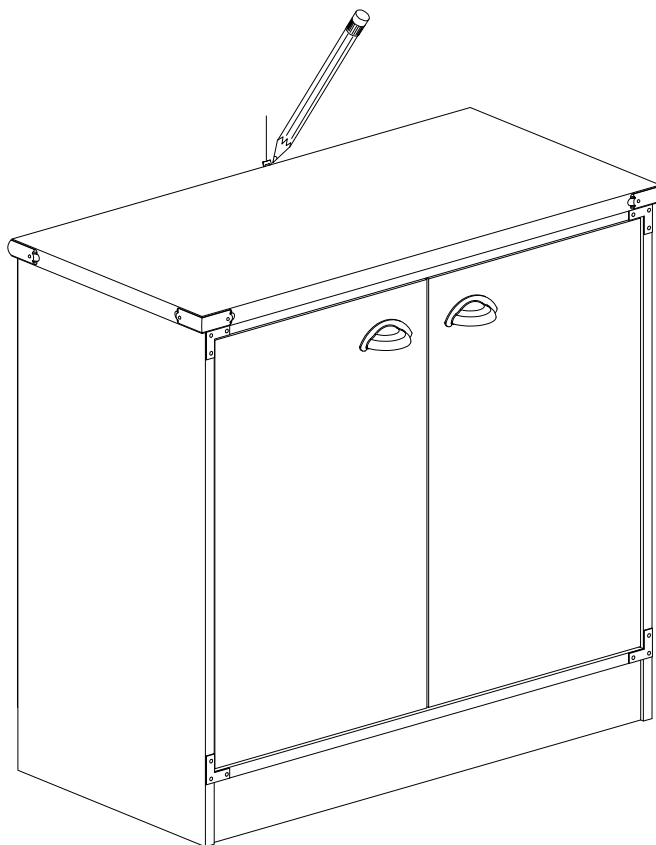
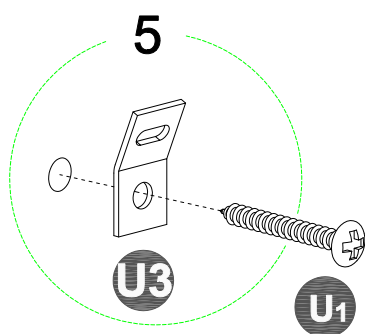
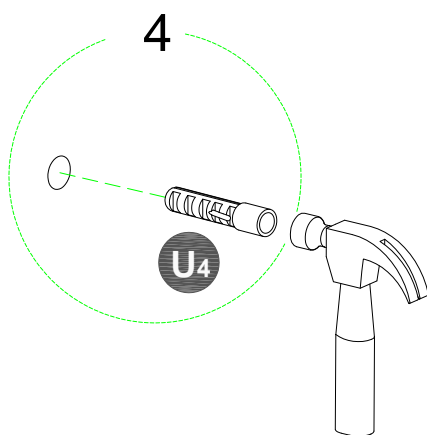
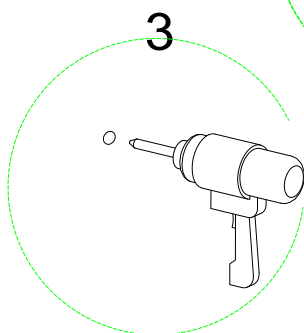
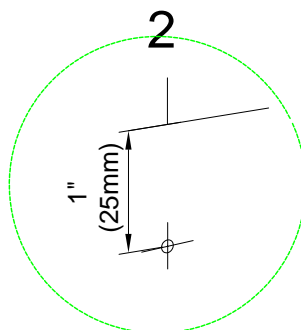
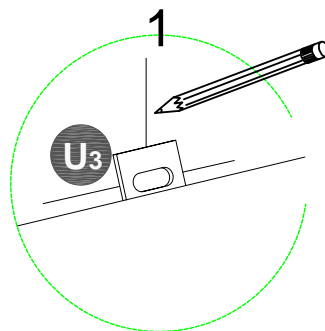
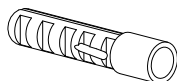


U₃ x 1pc



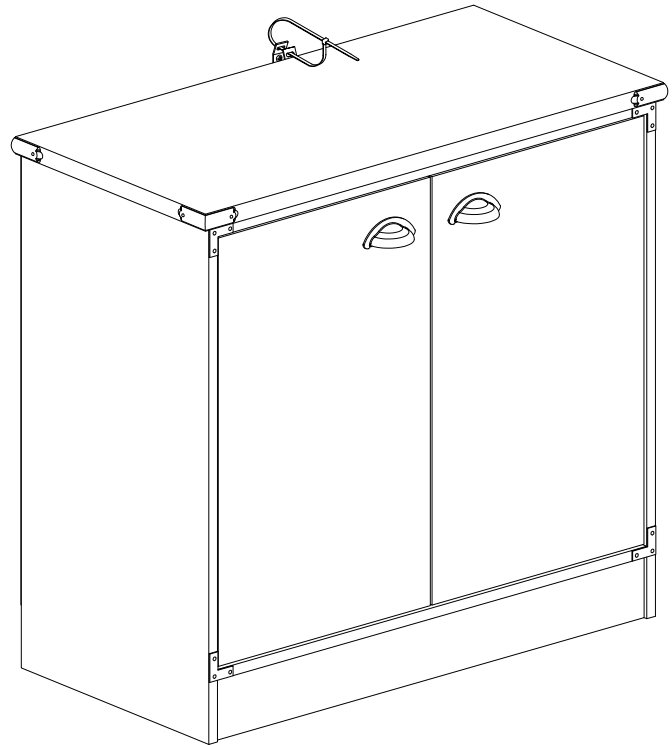
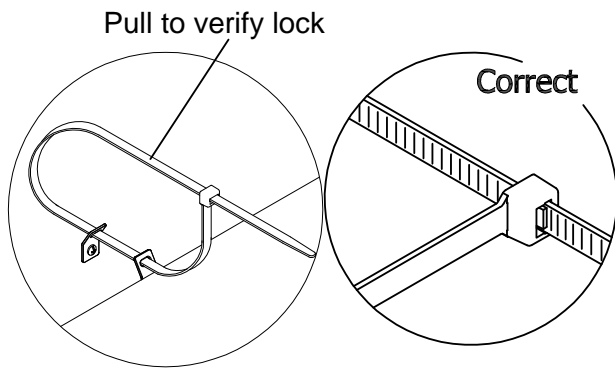
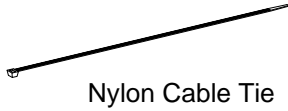
Connecting Plate

U₄ x 1pc



STEP 16

U5 x 1pc



Maximum weight capacities

